

COTSWOLD MEDICAL CENTER

309 S. SHARON AMITY ROAD
CHARLOTTE | NORTH CAROLINA



REED GRIFFITH
704-619-0473
reed@FlagshipHP.com

FOR LEASE

PROPERTY OVERVIEW

PROPERTY OVERVIEW

- 3-story Class "A" medical office building
- Stunning 3-story atrium with skylight
- Diverse tenant mix with no overlap
- Monument signage provides excellent visibility
- Directly across from Cotswold Shopping Center and a abundance of nearby amenities

LOCATION

Cotswold Medical Center is located near the intersection of Randolph Road and S. Sharon Amity Road, in one of the most affluent, mature residential areas of South Charlotte - approximately 3 miles from both CMC Main and Presbyterian Novant Main hospital campuses.

Directly across from the property is the Cotswold Shopping Center, anchored by one of the highest performing Harris Teeter groceries in the state.

CONTACT:

REED GRIFFITH
704-619-0473
reed@FlagshipHP.com



TOTAL BUILDING AREA:
± 38,041 RSF



AVAILABLE SPACE:
SUITE 206: 2,768 RSF



LEASE RATE:
\$25.00/SF



LEASE TYPE:
NNN

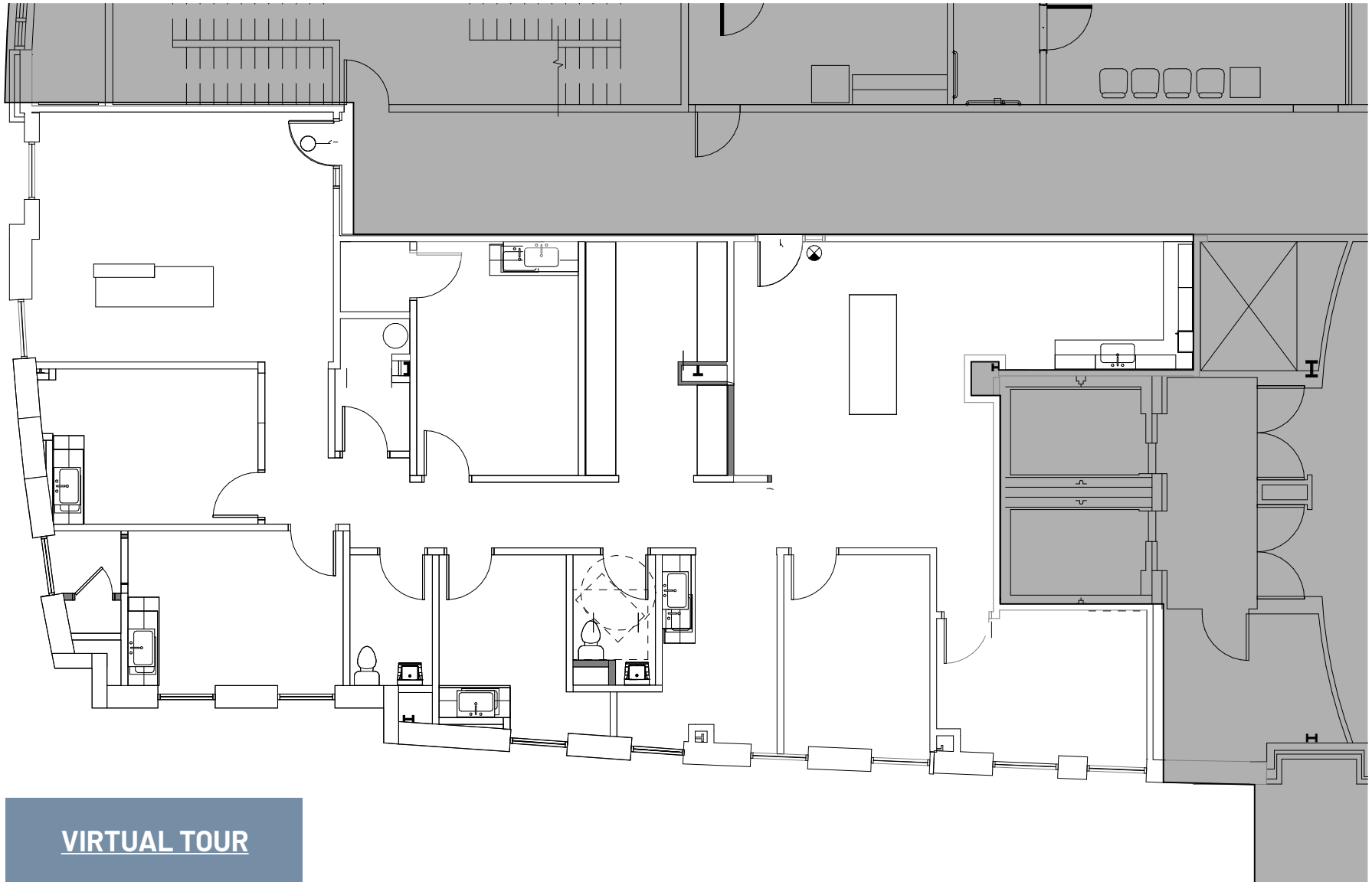


AVAILABLE:
July 1, 2025



PARKING RATIO:
4.6/1,000

FLOOR PLAN: SUITE 206



AERIAL MAP

