

COLTSGATE COMMONS

2700 COLTSGATE ROAD
CHARLOTTE | NORTH CAROLINA



TIFFANY SLAYDEN
704-906-9699
tiffany@FlagshipHP.com

FOR LEASE

PROPERTY OVERVIEW

PROPERTY SUMMARY

Coltsgate Commons is a two-story professional office building featuring convenient surface parking and a diverse tenant mix, found in the heart of SouthPark. Monument signage provides excellent visibility, and an abundance of nearby amenities make this property desirable to tenants.



CONTACT:

TIFFANY SLAYDEN
704-906-9699
tiffany@FlagshipHP.com



BUILDING AREA:
± 18,600 SF



AVAILABLE SPACE:
Suite 101: 3,239 SF
Suite 105: 1,855 SF



LEASE RATE:
\$33.50/SF



LEASE TYPE:
Full Service

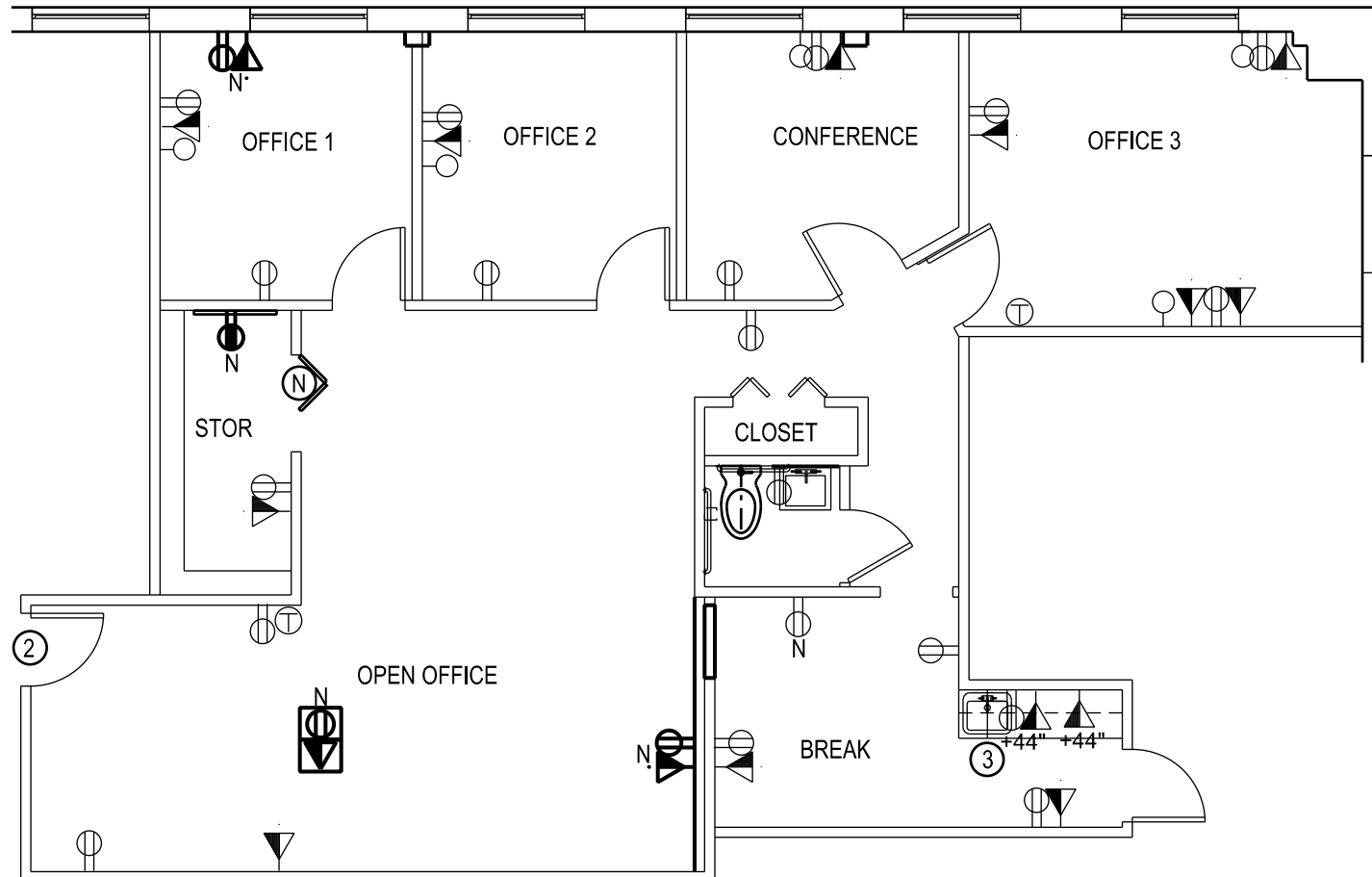


AVAILABLE:
August 1, 2025



YEAR BUILT:
1995

FLOORPLAN



SUITE 105:
1,855 RSF
General Office Use Only

AREA MAP

