

# ALEXANDER BUILDING REDEVELOPMENT PROJECT

13620 REESE BOULEVARD  
CHARLOTTE | NORTH CAROLINA



WILL ROBERTSON  
704-996-5824  
[will@FlagshipHP.com](mailto:will@FlagshipHP.com)

GREG MCINTOSH  
704-562-2153  
[greg@FlagshipHP.com](mailto:greg@FlagshipHP.com)

## FOR LEASE

# PROPERTY OVERVIEW



**BUILDING SIZE:**  
128,510 SF



**AVAILABLE SPACE:**  
Second Floor: 30,870 SF  
Suite 305: 9,206 SF  
Suite 400A: 6,620 SF



**PRICING:**  
\$36.00/SF



**LEASE TYPE:**  
Full Service

## PROPERTY SUMMARY:

- Direct I-77 access (Exit 23)
- Adjacent to Novant Health – Huntersville Medical Center
- Designed for modern medical use – can accommodate surgery center on second floor
- Covered drop-off + gurney elevator
- Monument signage with high visibility
- **Generous T.I. allowance**

## CONTACT:

**WILL ROBERTSON**  
704-996-5824  
will@FlagshipHP.com

**GREG MCINTOSH**  
704-562-2153  
greg@FlagshipHP.com



# INTERIOR RENDERING 1

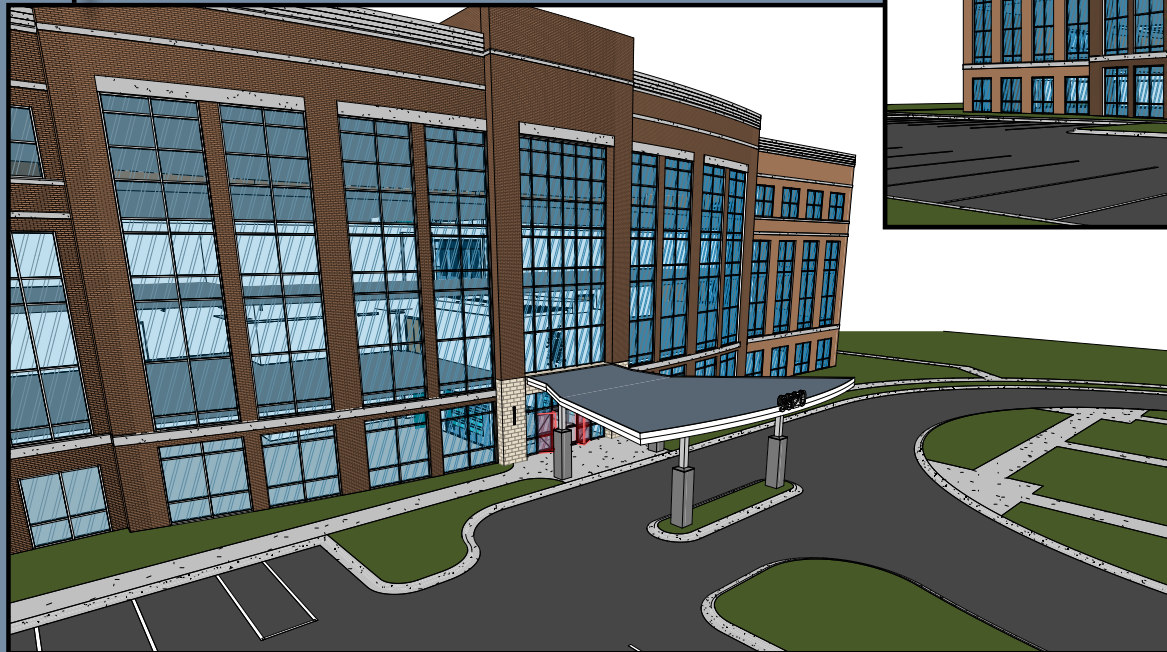
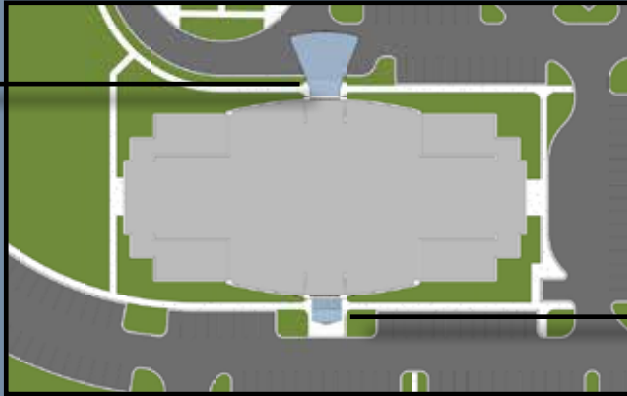


# INTERIOR RENDERING 2



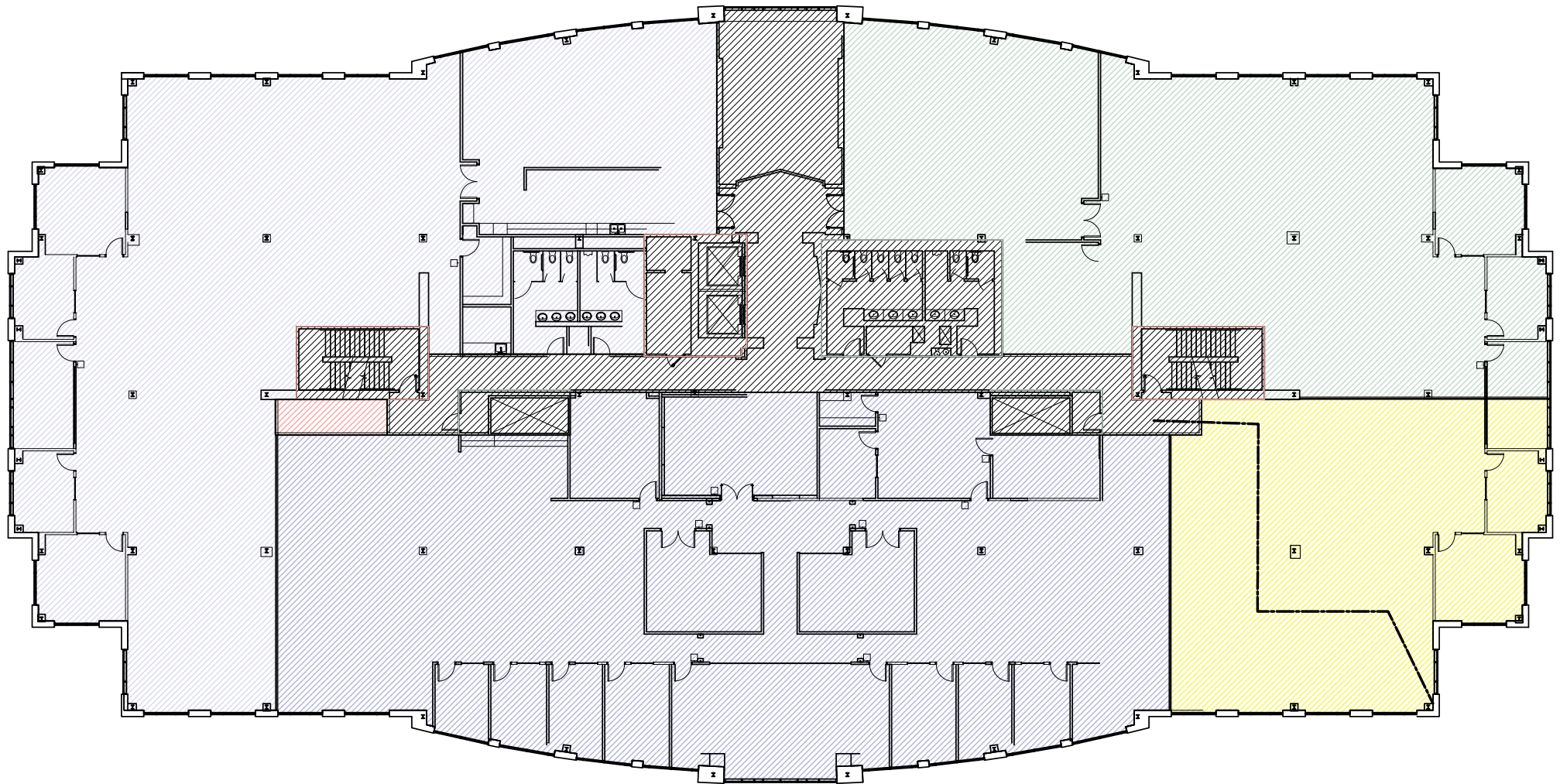


# EXTERIOR RENDERINGS



- 13620 Reese Blvd is being transformed into a modern medical office destination with Class A finishes and full surgery suite capabilities – ideal for healthcare providers seeking premium space in Huntersville.
- Modern new entrances and stylish covered drop-off canopies are being added on both sides of the building – combining convenience, comfort, and curb appeal for patients and providers alike.

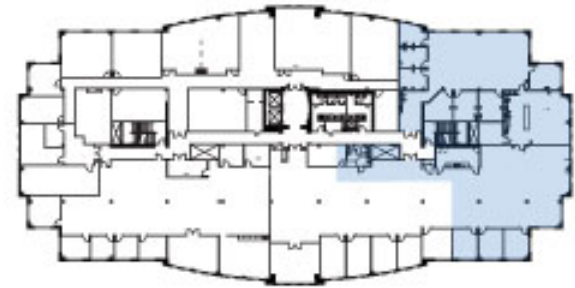
# POTENTIAL FLOOR PLAN: SECOND FLOOR



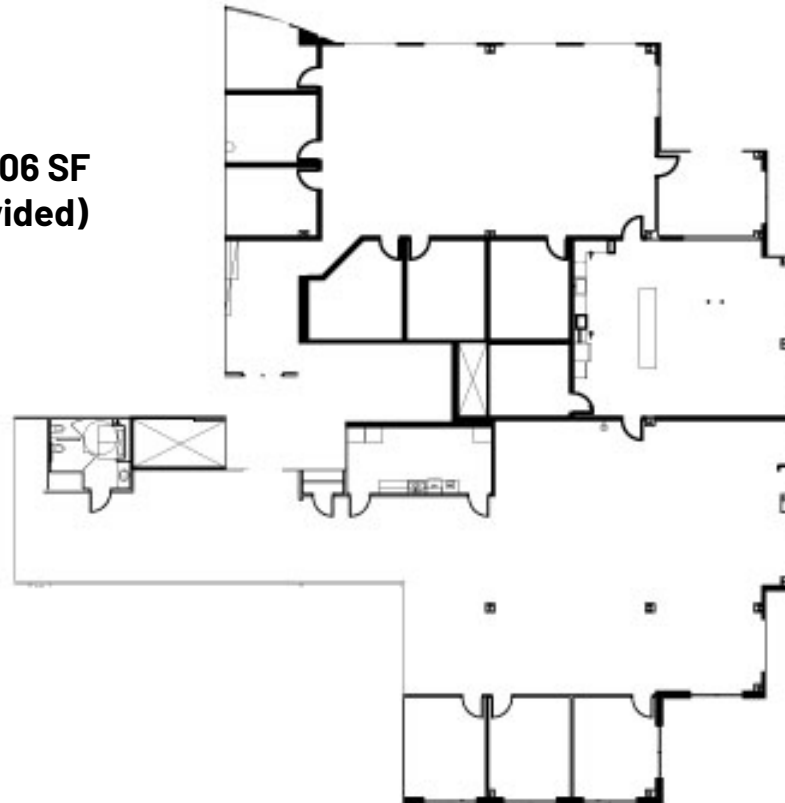
**AVAILABLE SPACE: Up to 30,870 SF**

# THIRD FLOOR:

## SUITE 305

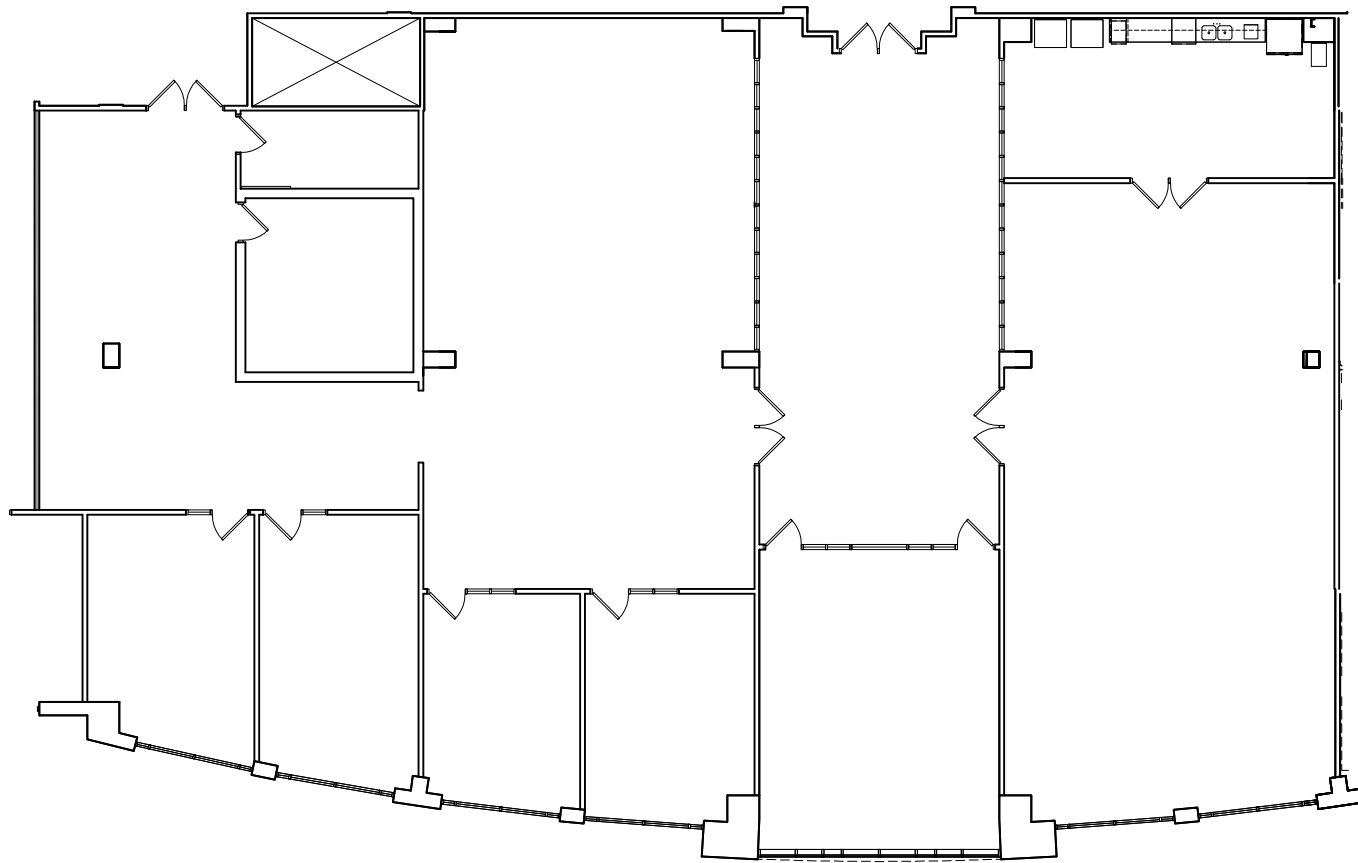


**SUITE 305: 9,206 SF**  
**(Can be subdivided)**



# FOURTH FLOOR:

## SUITE 400A



**SUITE 400A: 6,620 SF**



# AREA MAP

