

LAKE NORMAN MEDICAL PLAZA

146 & 170 MEDICAL PARK ROAD
MOORESVILLE | NORTH CAROLINA



WILL ROBERTSON
704-996-5824
will@flagshipHP.com

GREG MCINTOSH
704-562-2153
greg@flagshipHP.com

FOR LEASE

PROPERTY OVERVIEW

PROPERTY SUMMARY

- 3 Medical Office Buildings within walking distance of Lake Norman Regional Medical Center
- Near Lowe's headquarters
- Diverse Tenant Mix
- Owned and Managed by Healthcare Trust of America, Inc.

CONTACT:

WILL ROBERTSON
704-996-5824
will@flagshipHP.com

GREG MCINTOSH
704-562-2153
greg@flagshipHP.com

146 Medical Park Road:

 **Total Building Area:**
± 44,072 RSF

 **Year Built:**
2022

 **Lease Rate:**
\$29.00/SF, FS

 **Total Availability:**
± 10,376 RSF

- **Suite 108** - 3,898 SF
- **Suite 204** - 716 SF
- **Suite 250** - 5,762 SF

170 Medical Park Road:

 **Total Building Area:**
± 45,108 RSF

 **Year Built:**
2000

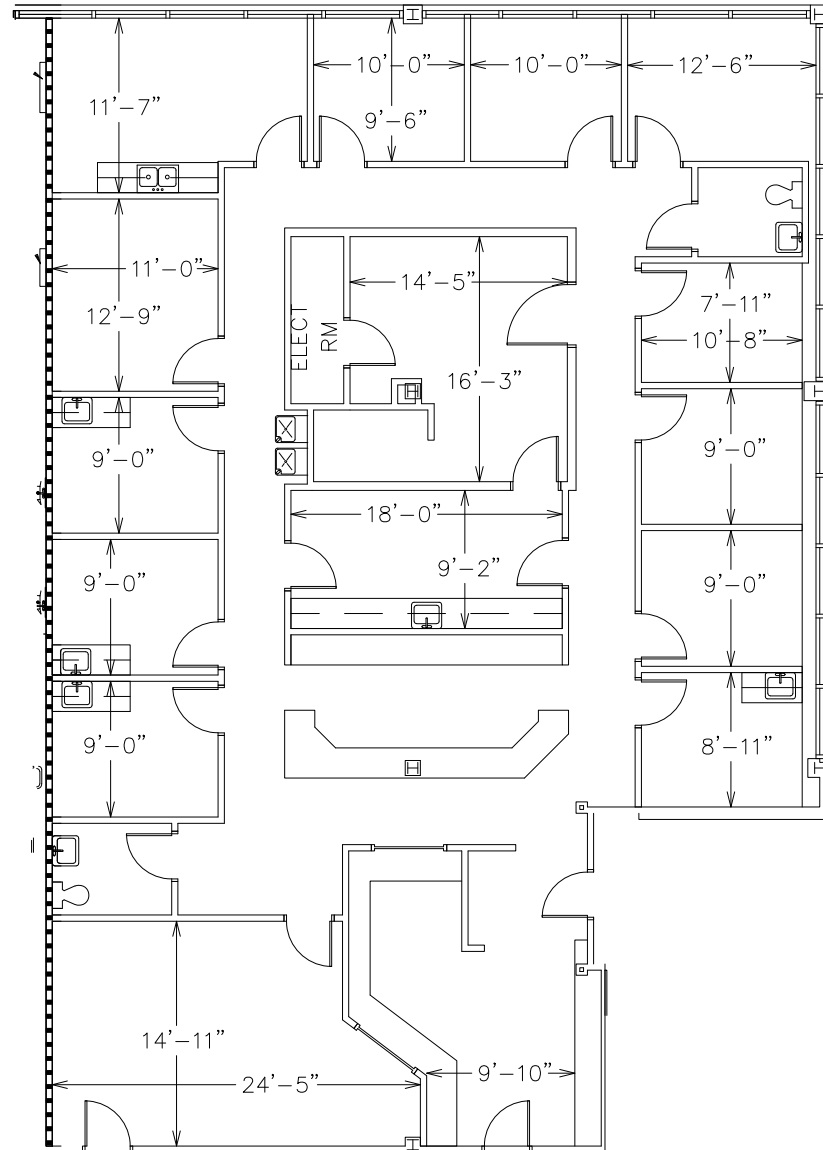
 **Lease Rate:**
\$29.00/SF, FS

 **Total Availability:**
± 20,244 RSF

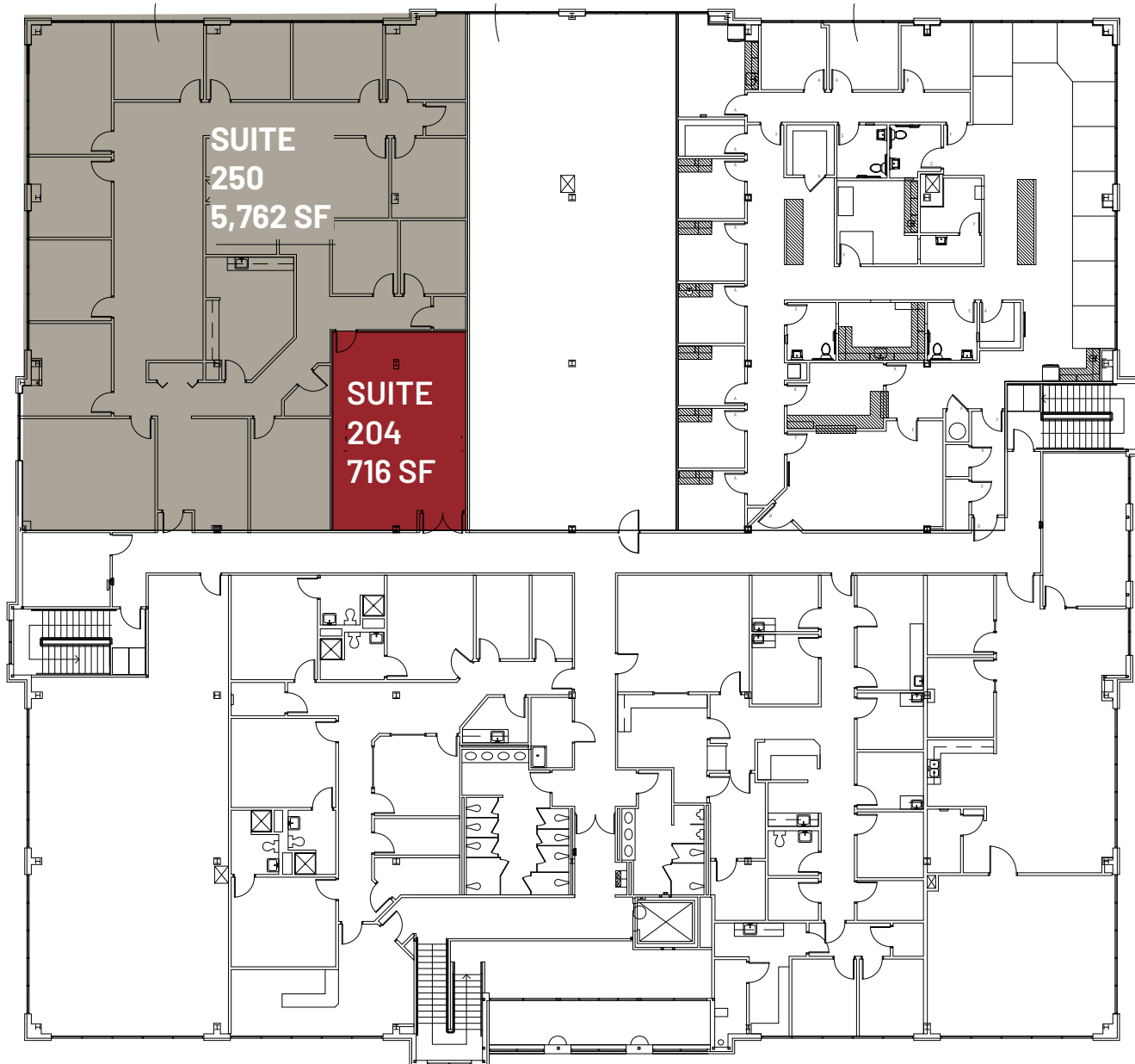
- **Suite 103** - 5,077 SF
- **Suite 204** - 5,435 SF
- **Suite 210** - 9,732 SF

FLOOR PLAN 108

SUITE 108:
3,898 SF

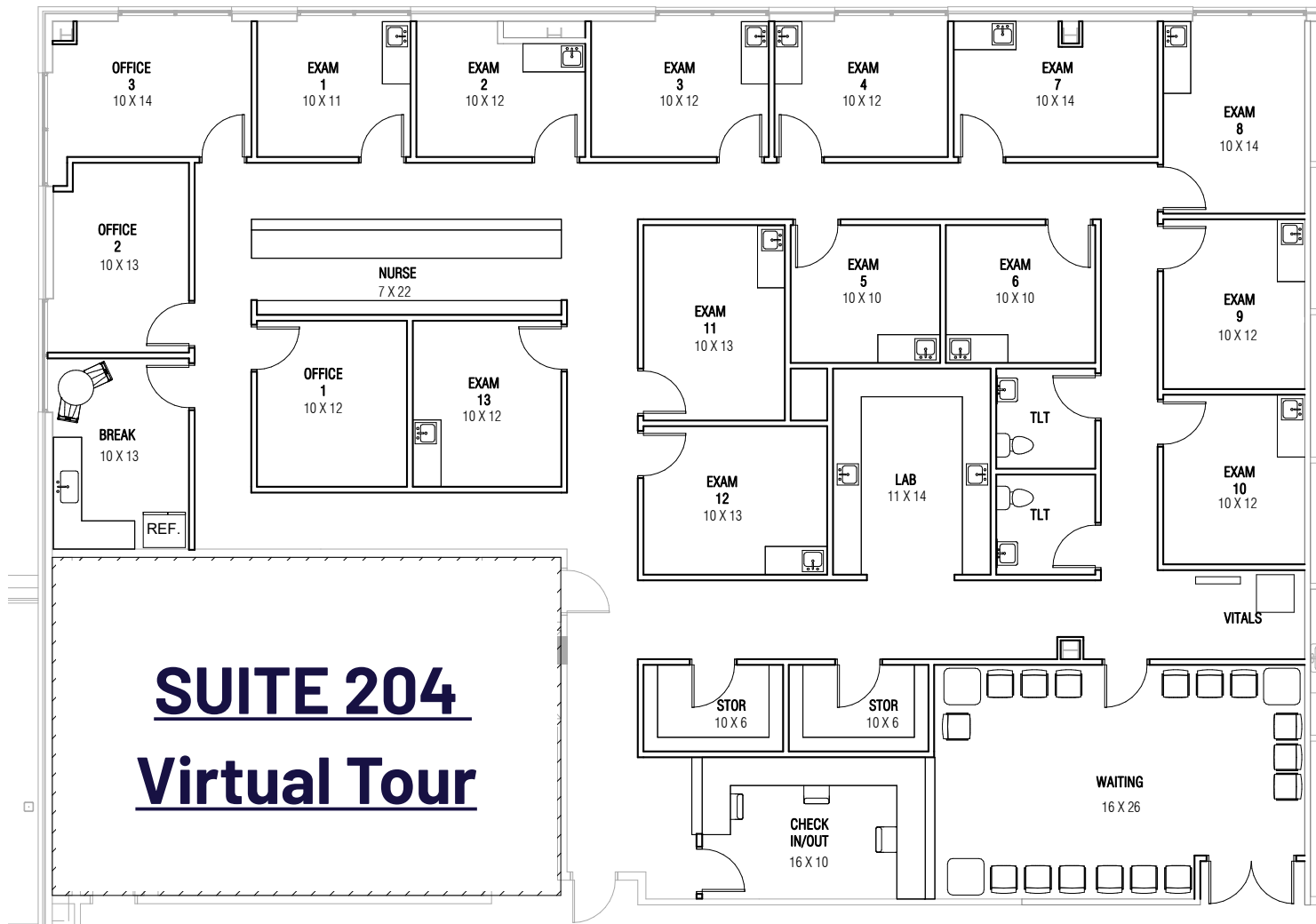


FLOOR PLAN 146



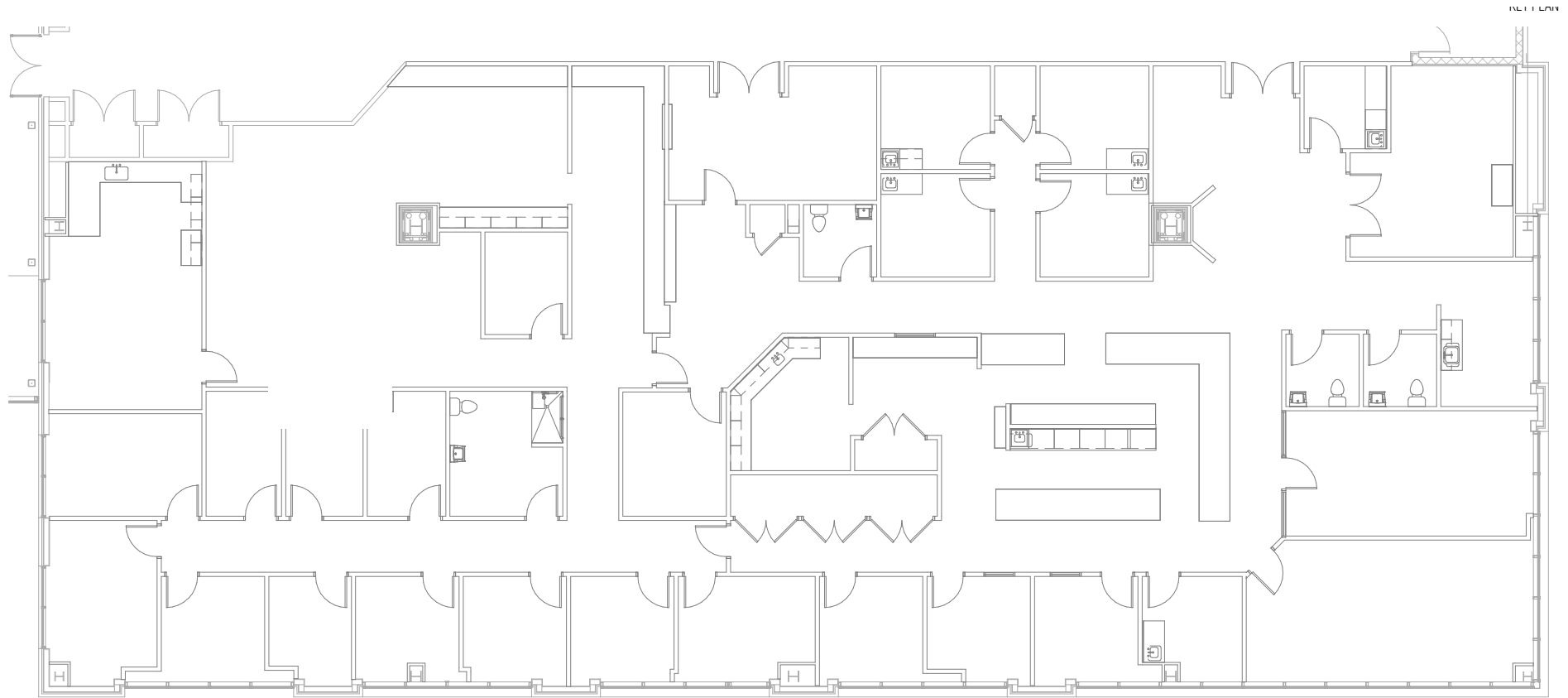
FLOOR PLAN

170-A: SUITE 204 | 5,435 SF



FLOOR PLAN

170: SUITE 210 | 9,732 SF



SUITE 210 Virtual Tour

AREA MAP

