

DENTAL OFFICE FOR LEASE

3111 SPRINGBANK LANE
CHARLOTTE | NORTH CAROLINA



CONTACT:

TIFFANY SLAYDEN
d. 704-906-9699
tiffany@FlagshipHP.com

FOR LEASE

PROPERTY OVERVIEW



Total Available Space:
± 2,333 RSF



Suite F: Second Floor with
elevator access



Lease Rate:
\$28.00/NNN



Operating Expenses:
\$9.62/RSF/yr



Lease Type:
Triple Net



Available:
September 1, 2024

PROPERTY SUMMARY

- A-dec dental cabinetry included in lease
- Contemporary 2-story professional office building
- Located near Highway 51 and Providence Road
- Close proximity to The Arboretum
- Signage opportunities

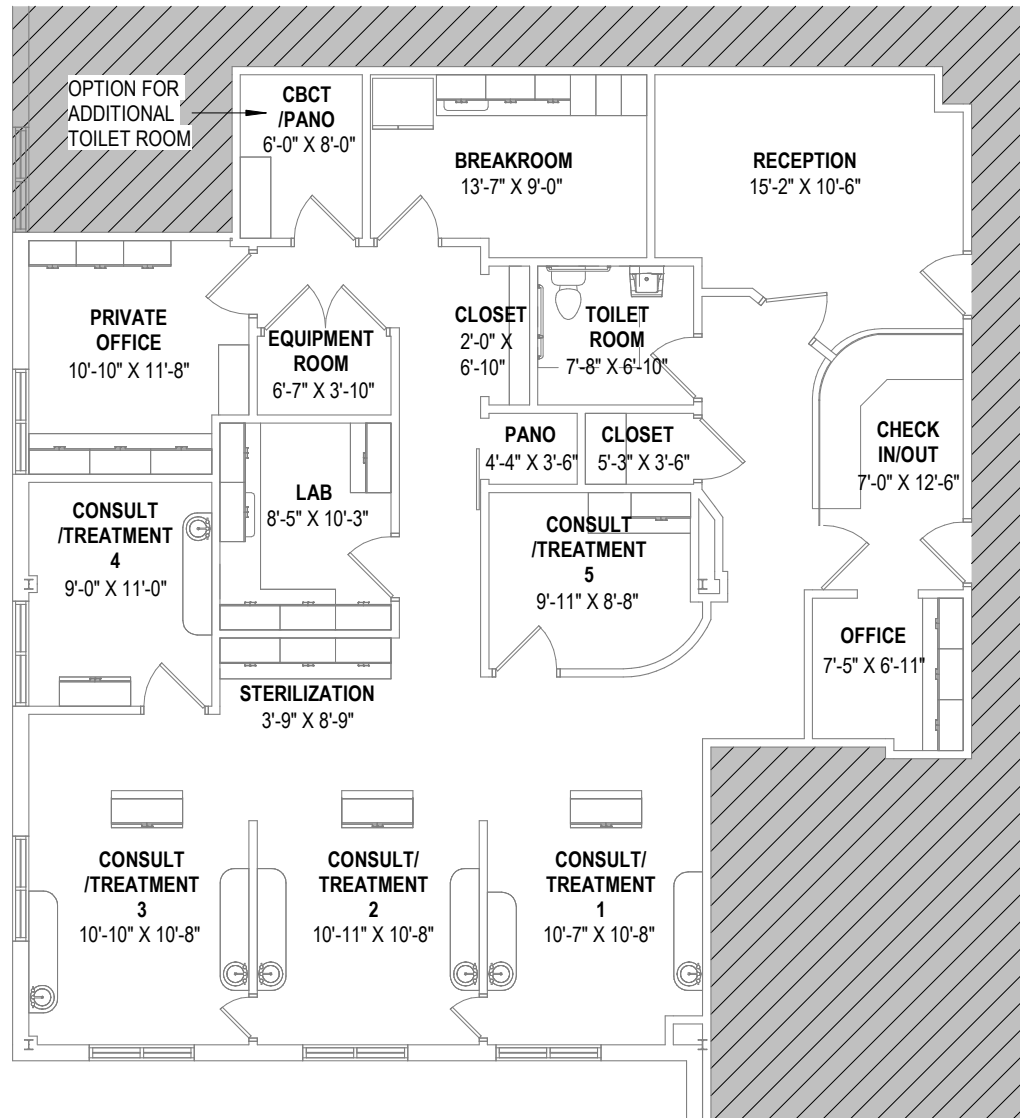


CONTACT:

TIFFANY SLAYDEN
d. 704-906-9699
tiffany@FlagshipHP.com

FLOOR PLAN

VIRTUAL TOUR



① SUITE F
1/8" = 1'-0"

AREA OVERVIEW

