

# UNIVERSITY MEDICAL PARK

101 EAST W.T. HARRIS BOULEVARD  
CHARLOTTE | NORTH CAROLINA



**WILL ROBERTSON**  
704-996-5824  
will@flagshipHP.com

**GREG MCINTOSH**  
704-562-2153  
greg@flagshipHP.com

## FOR LEASE

# PROPERTY OVERVIEW

## PROPERTY SUMMARY

University Medical Park is composed of five multi-tenant buildings. Located at 101 E. W.T. Harris Boulevard, this medical office park falls within in the heart of the University area of Charlotte.

The site's close proximity to the Atrium Health University City campus, ample parking, and a diverse tenant mix make this property a first-rate office opportunity for a variety of medical practices.



**TOTAL BUILDING AREA:**  
± 250,000 SF



**TOTAL AVAILABILITY:**  
± 25,545 RSF



**LEASE RATE:**  
\$21.50/SF



**LEASE TYPE:**  
NNN



**YEAR BUILT:**  
1983

## AVAILABLE SUITES

### **BUILDING 1000:**

Suite 1210 - 2,730 SF  
Suite 1216 - 1,847 SF

### **BUILDING 2000:**

Suite 2223 - 1,680 SF

### **BUILDING 4000:**

Suite 4101 - 3,436 SF

### **BUILDING 5000**

Suite 5106 - 1,565 SF  
Suite 5304 - 6,009 SF  
Suite 5402 - 8,276 SF

## CONTACT

### **WILL ROBERTSON**

704-996-5824

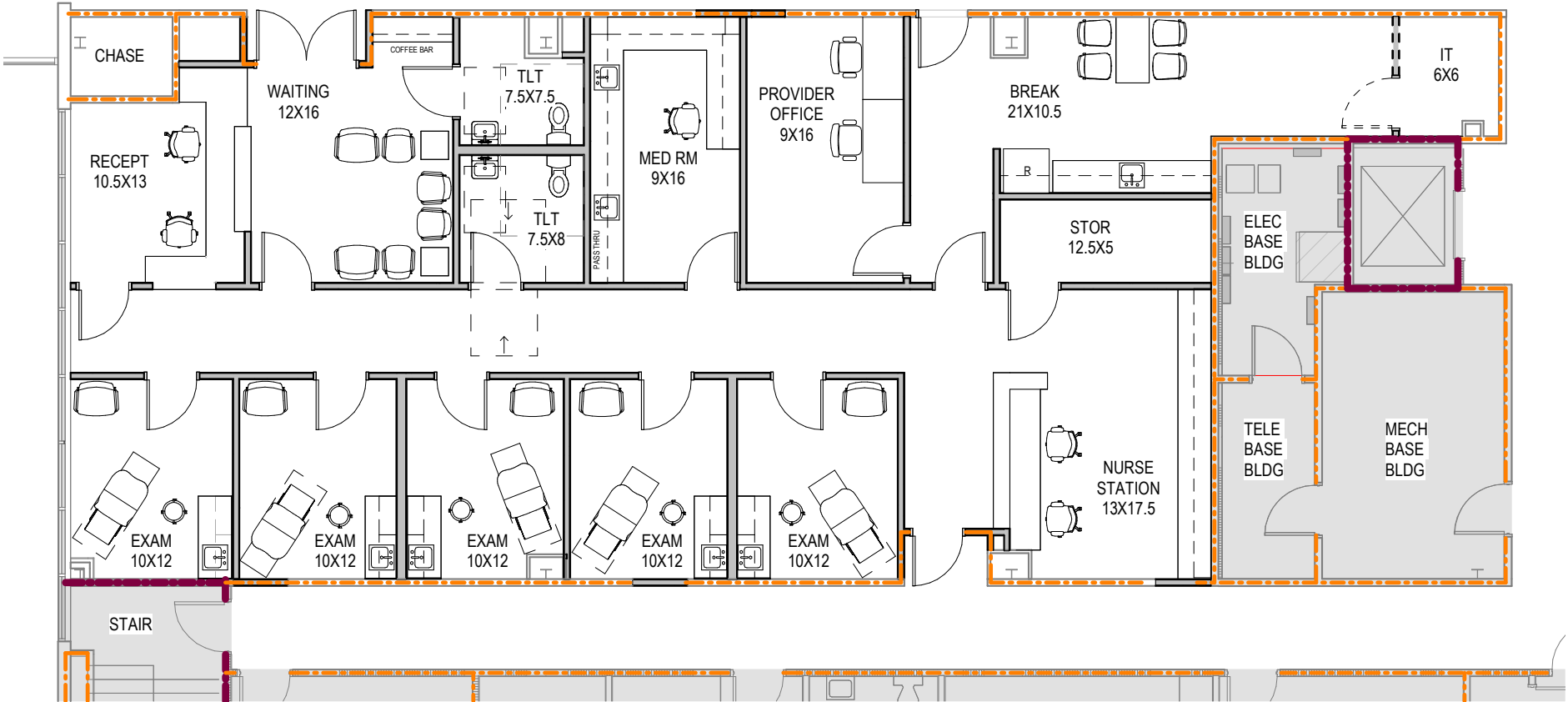
[will@flagshiphp.com](mailto:will@flagshiphp.com)

### **GREG MCINTOSH**

704-562-2153

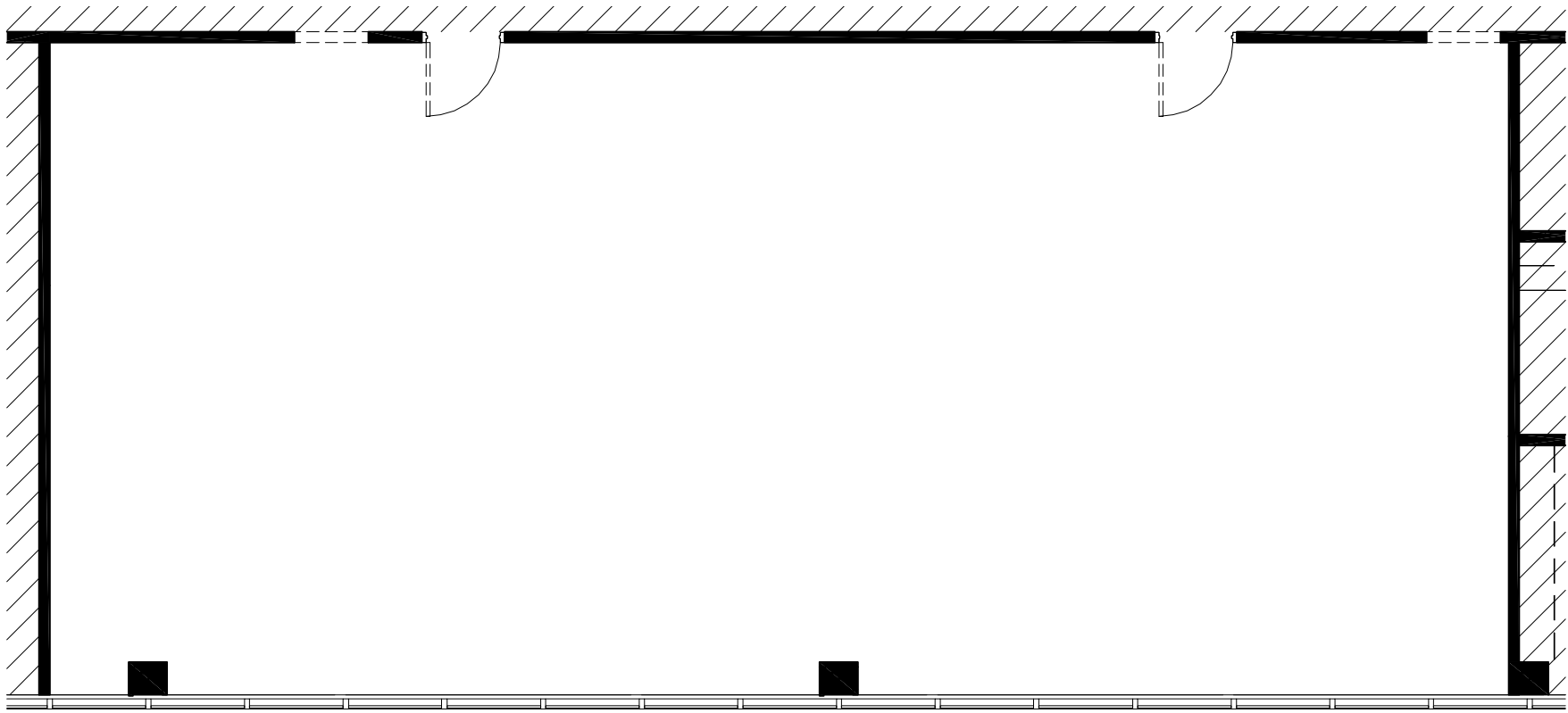
[greg@flagshiphp.com](mailto:greg@flagshiphp.com)

# BUILDING 1000: SUITE 1210



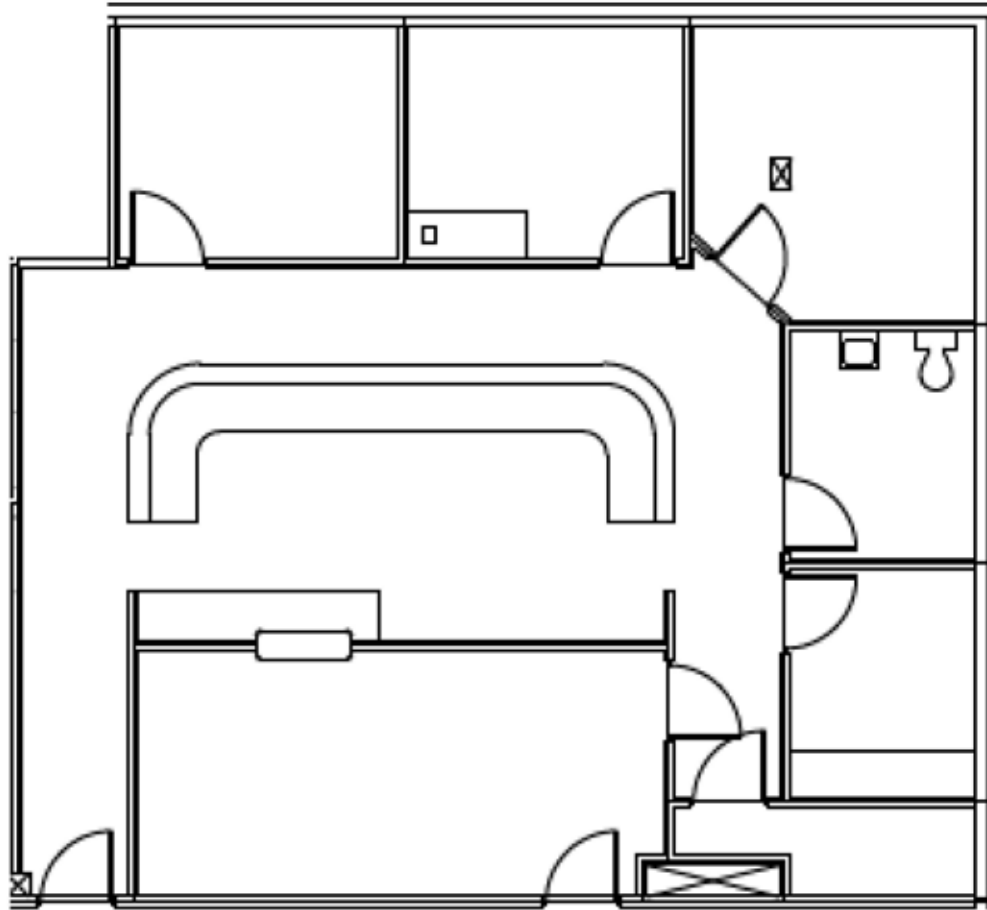
**SUITE 1210 - 2,730 SF**  
**Spec Suite**

# BUILDING 1000: SUITE 1216



**SUITE 1216 - 1,847 SF**  
**Vanilla Box Condition**

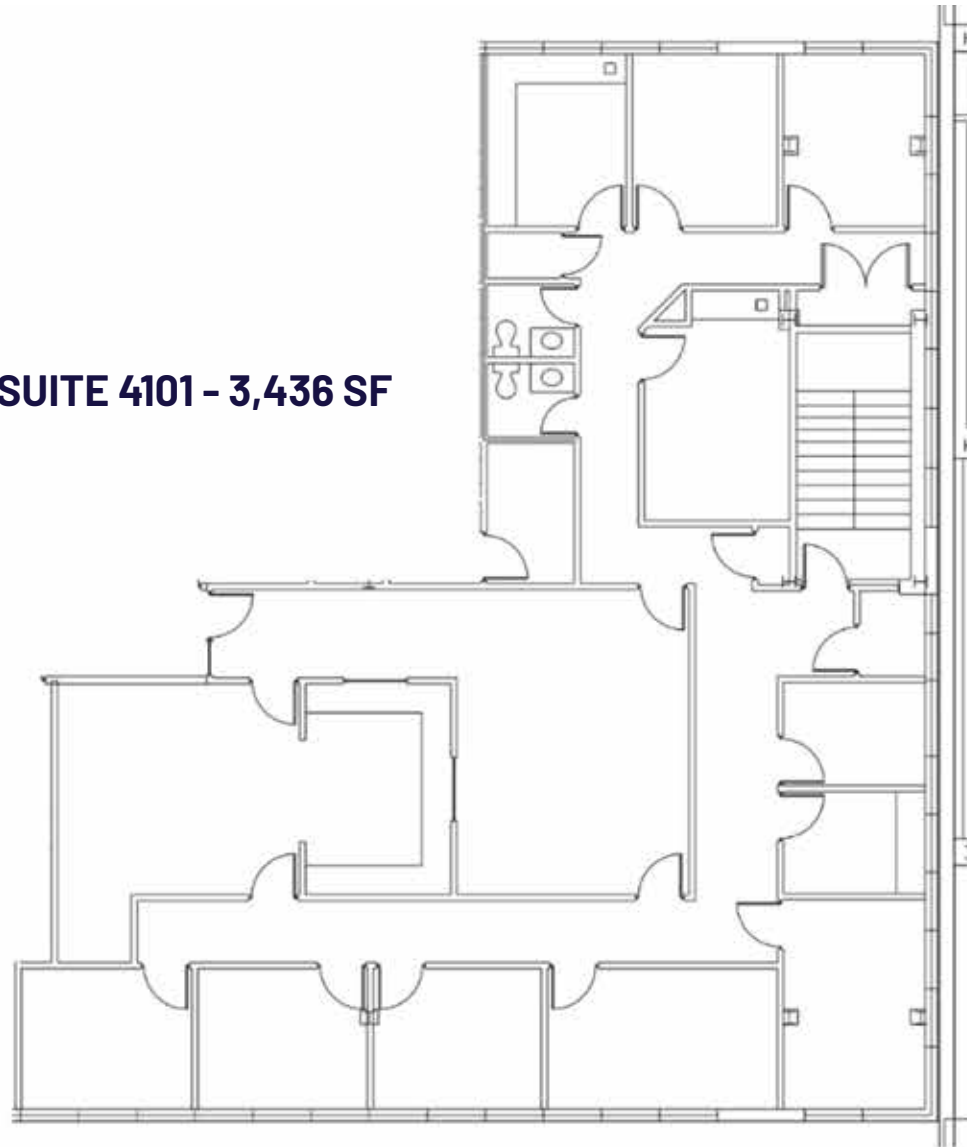
# BUILDING 2000: SUITE 2223



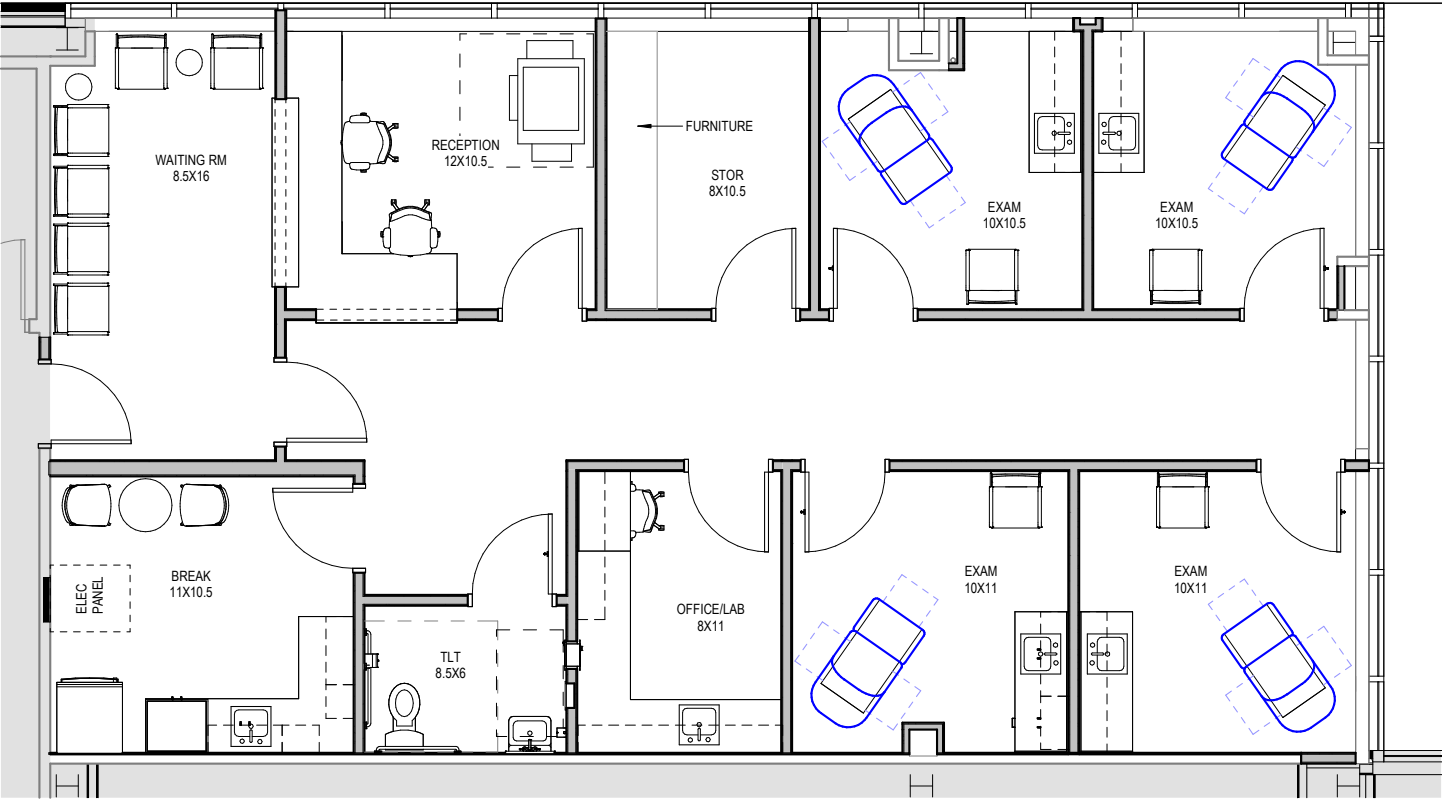
**SUITE 2223 - 1,680 SF**

# BUILDING 4000: SUITE 4101

**SUITE 4101 - 3,436 SF**

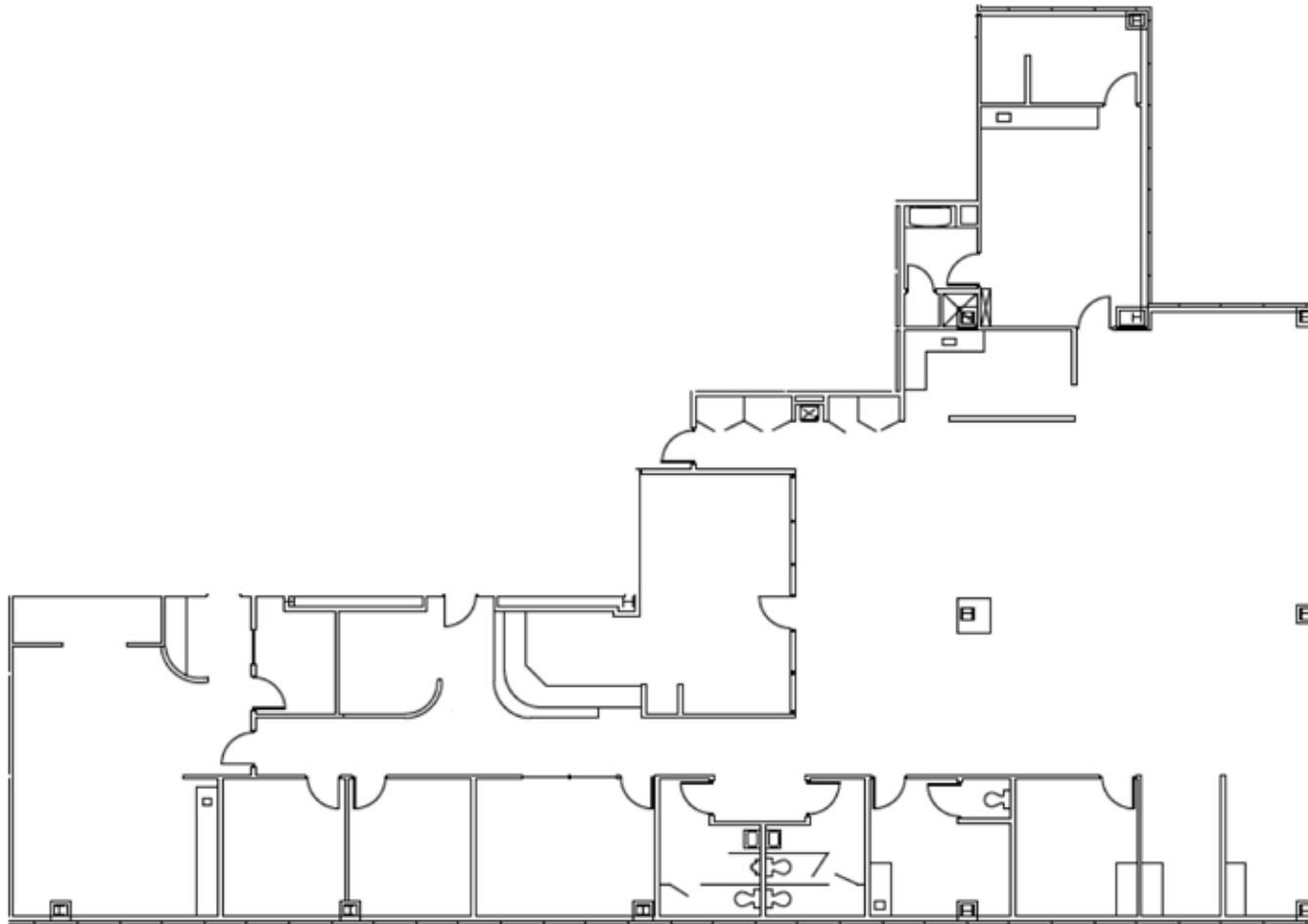


# BUILDING 5000: SUITE 5106



**SUITE 5106 - 1,565 SF**

# BUILDING 5000: SUITES 5304

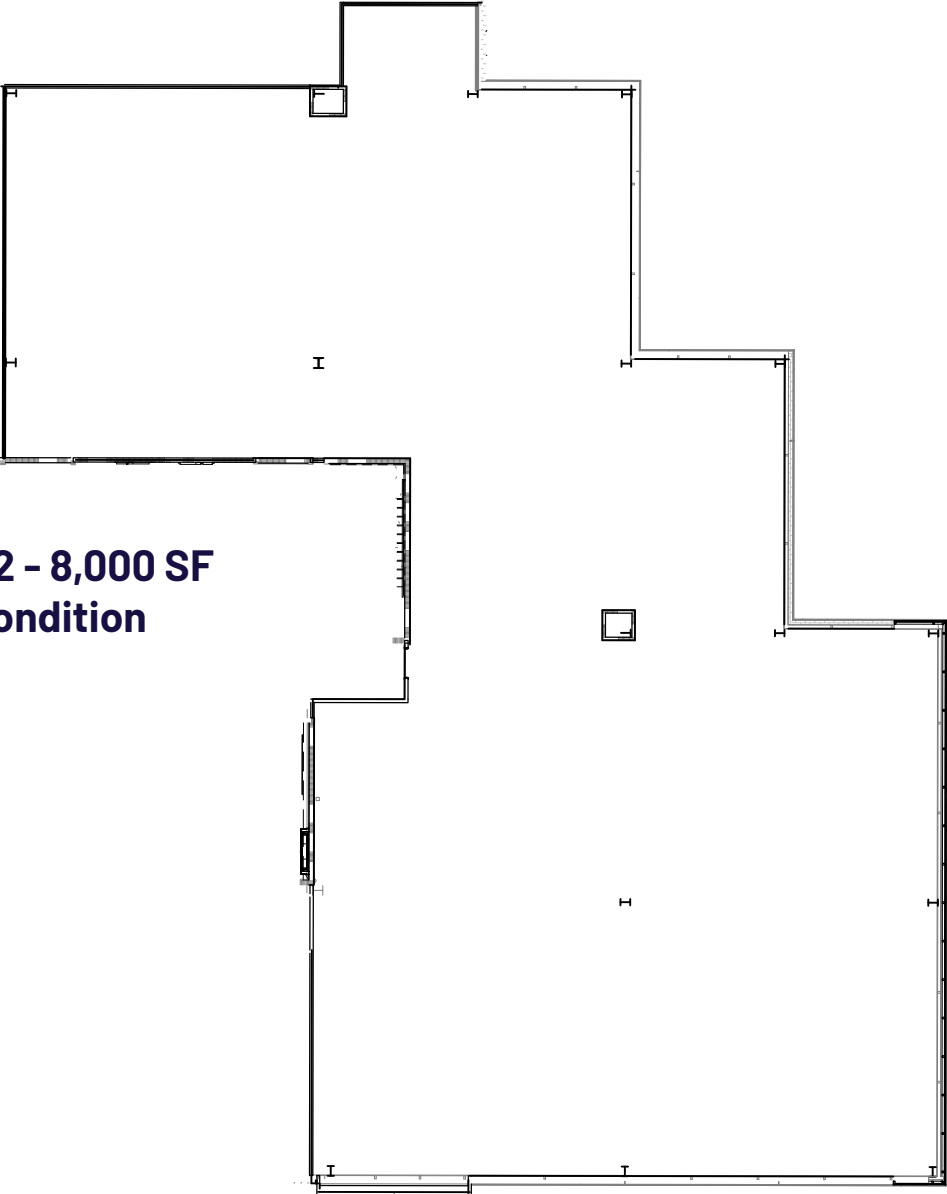


**SUITE 5304 - 6,009 SF**



# BUILDING 5000: SUITE 5402

**SUITE 5402 - 8,000 SF**  
**Shell Condition**



# AREA MAP

