

DENTAL OFFICE FOR LEASE

3111 SPRINGBANK LANE
CHARLOTTE | NORTH CAROLINA



CONTACT:

TIFFANY SLAYDEN
d. 704-906-9699
tiffany@FlagshipHP.com

FOR LEASE

PROPERTY OVERVIEW



Total Available Space: ± 2,333 RSF



Suite F: Second Floor with elevator access



Lease Rate: \$29.00/NNN



Operating Expenses: \$9.62/
RSF/yr



Lease Type: Triple Net



Available: September 1, 2024

PROPERTY SUMMARY

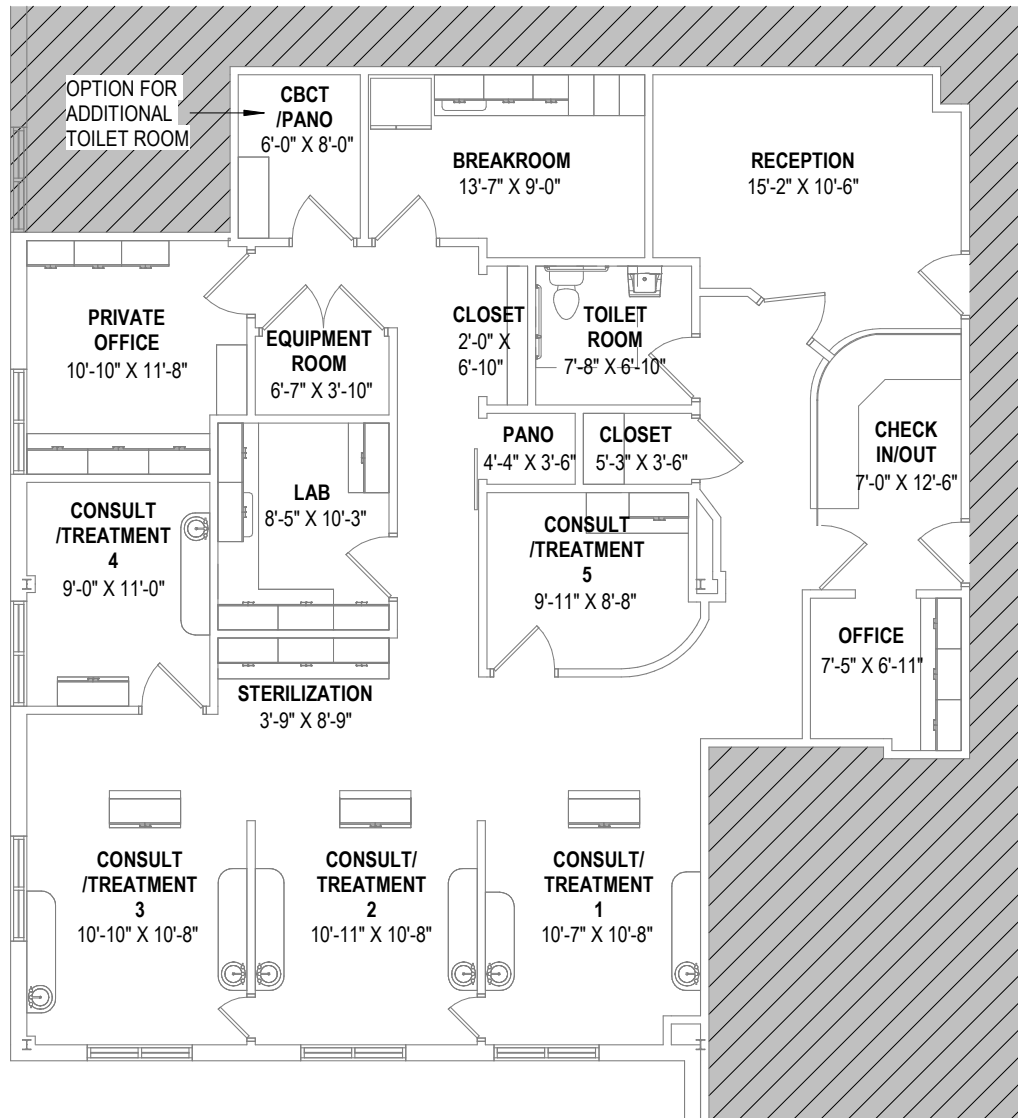
- A-dec dental cabinetry included in lease
- Contemporary 2-story professional office building
- Located near Highway 51 and Providence Road
- Close proximity to The Arboretum
- Signage opportunities



CONTACT:
TIFFANY SLAYDEN
d. 704-906-9699
tiffany@FlagshipHP.com

FLOOR PLAN

VIRTUAL TOUR



① SUITE F
1/8" = 1'-0"

AREA OVERVIEW

