

UNIVERSITY MEDICAL PARK

101 EAST W.T. HARRIS BOULEVARD
CHARLOTTE | NORTH CAROLINA



WILL ROBERTSON
704-996-5824
will@flagshipHP.com

GREG MCINTOSH
704-562-2153
greg@flagshipHP.com

FOR LEASE

PROPERTY OVERVIEW

PROPERTY SUMMARY

University Medical Park is composed of five multi-tenant buildings. Located at 101 E. W.T. Harris Boulevard, this medical office park falls within in the heart of the University area of Charlotte.

The site's close proximity to the Atrium Health University City campus, ample parking, and a diverse tenant mix make this property a first-rate office opportunity for a variety of medical practices.



TOTAL BUILDING AREA:
± 250,000 SF



TOTAL AVAILABILITY:
± 16,558 RSF



LEASE RATE:
\$21.50/SF



LEASE TYPE:
NNN



YEAR BUILT:
1983

AVAILABLE SUITES

BUILDING 1000:

Suite 1210 - 1,014 SF
Suite 1216 - 1,847 SF

BUILDING 2000:

Suite 2223 - 1,680 SF

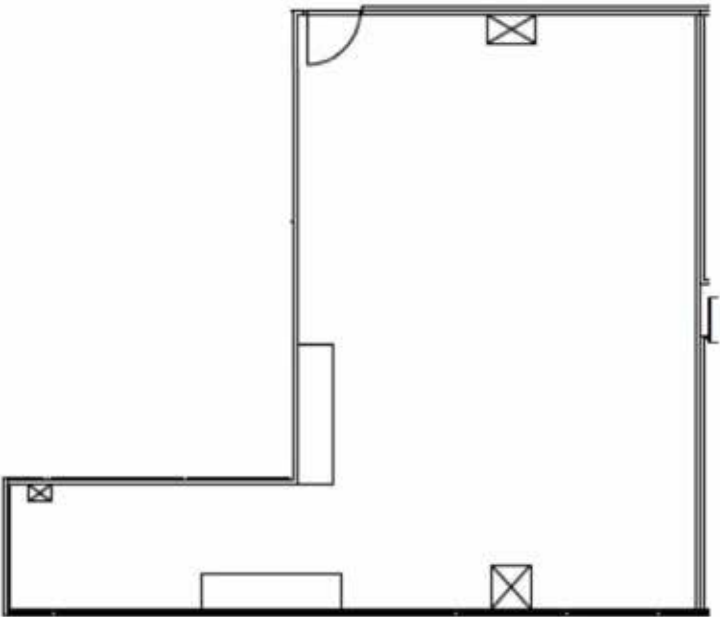
BUILDING 4000:

Suite 4101 - 3,436 SF

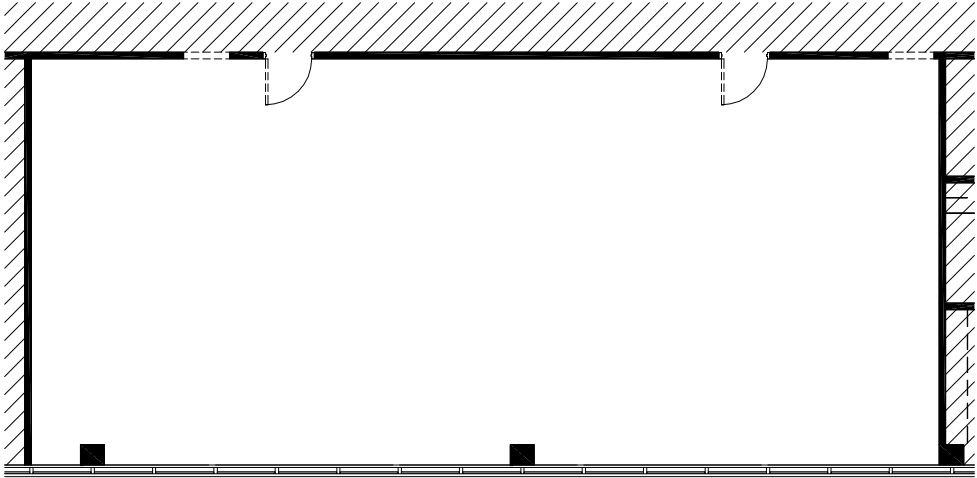
BUILDING 5000

Suite 5103 - 4,086 SF
Suite 5106 - 1,565 SF
Suite 5304 - 6,009 SF
Suite 5402 - 8,276 SF

BUILDING 1000 FLOORPLANS

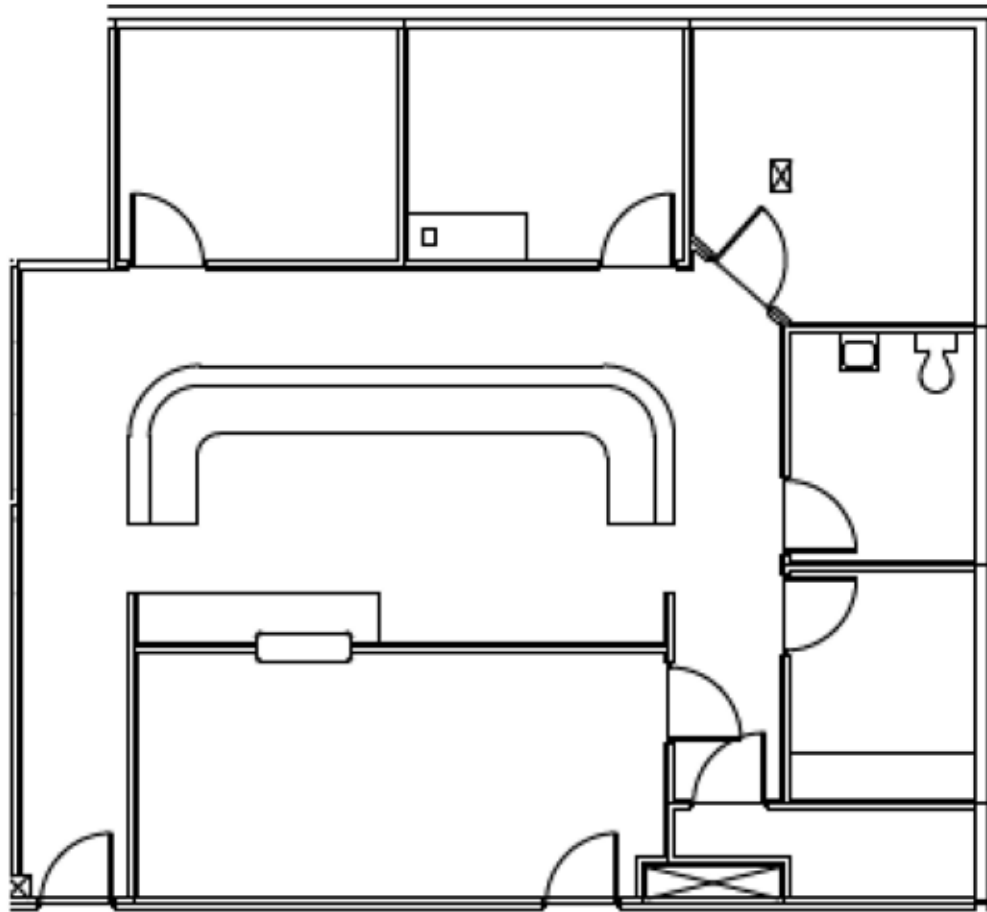


SUITE 1210 - 1,014 SF
Vanilla Box Condition



SUITE 1216 - 1,847 SF
Vanilla Box Condition

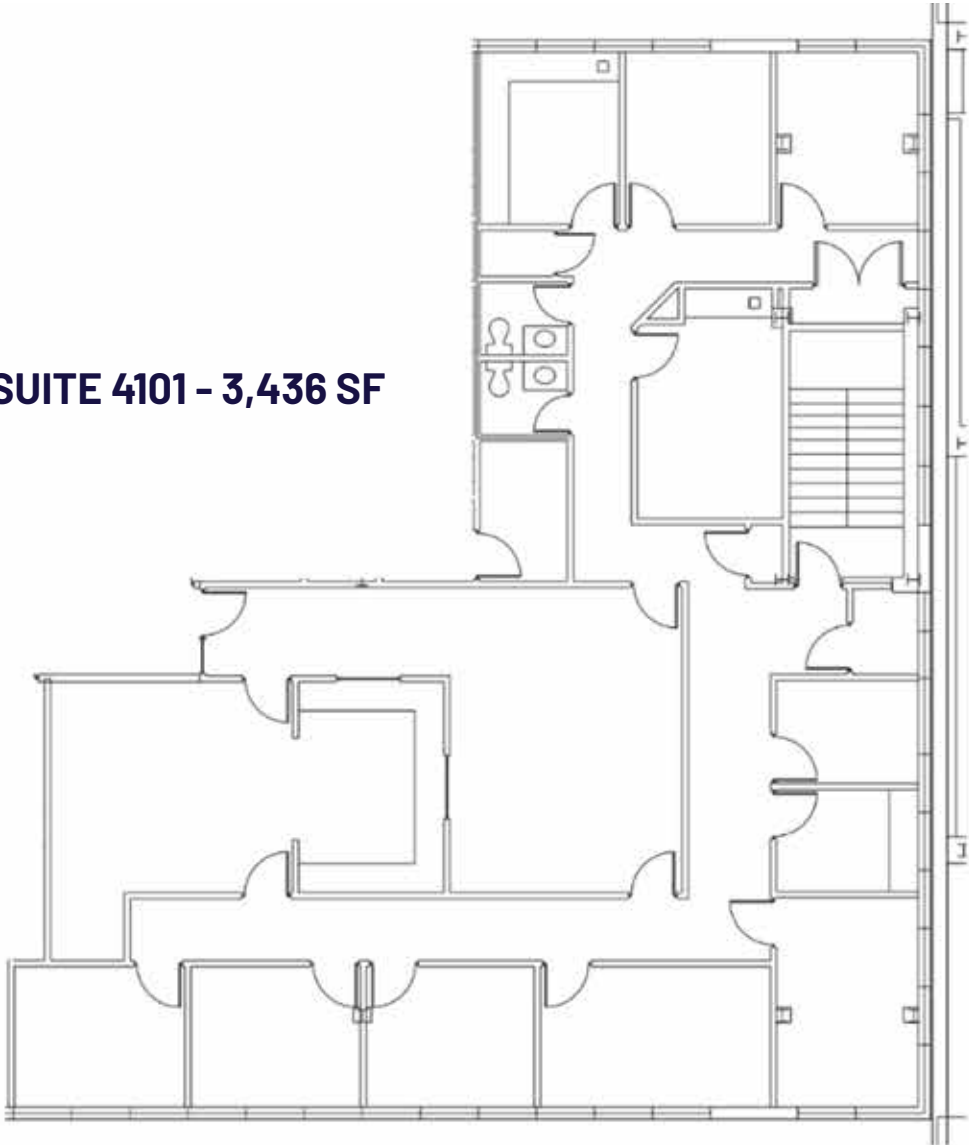
BUILDING 2000 FLOORPLAN



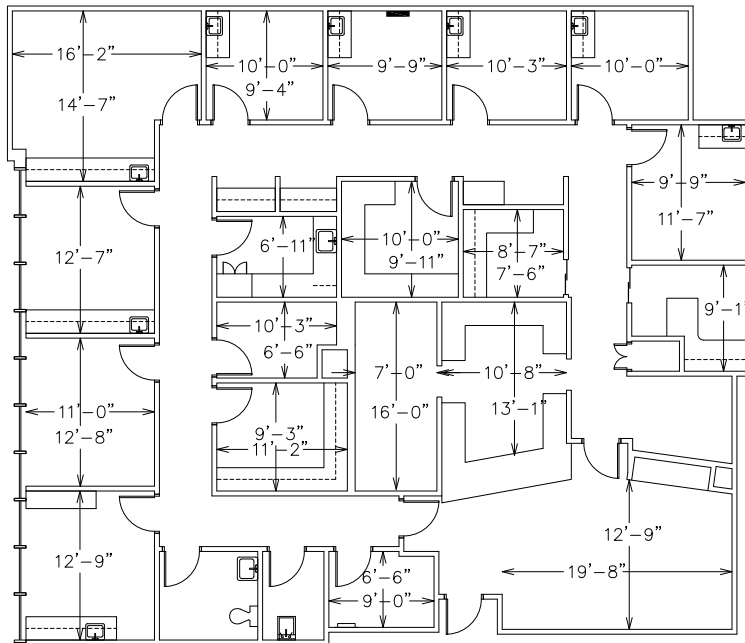
SUITE 2223 - 1,680 SF

BUILDING 4000 FLOORPLAN

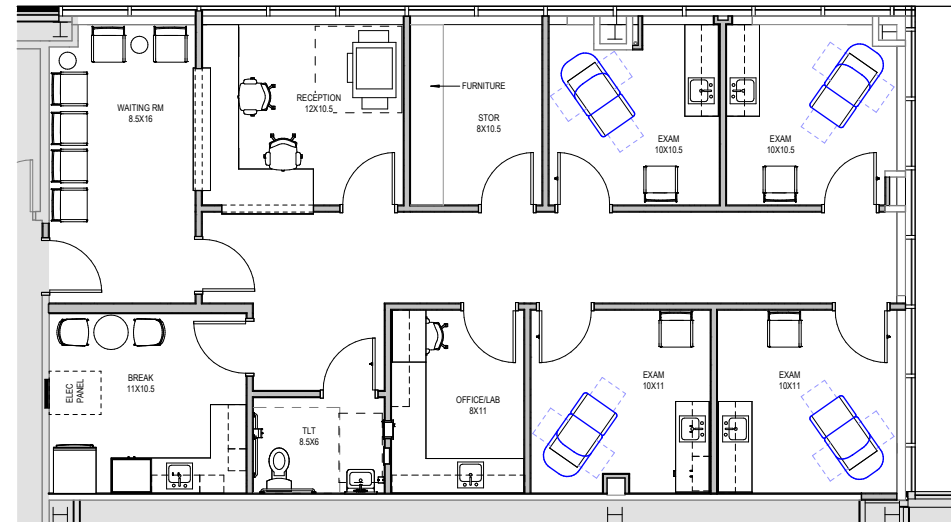
SUITE 4101 - 3,436 SF



BUILDING 5000 FLOORPLANS

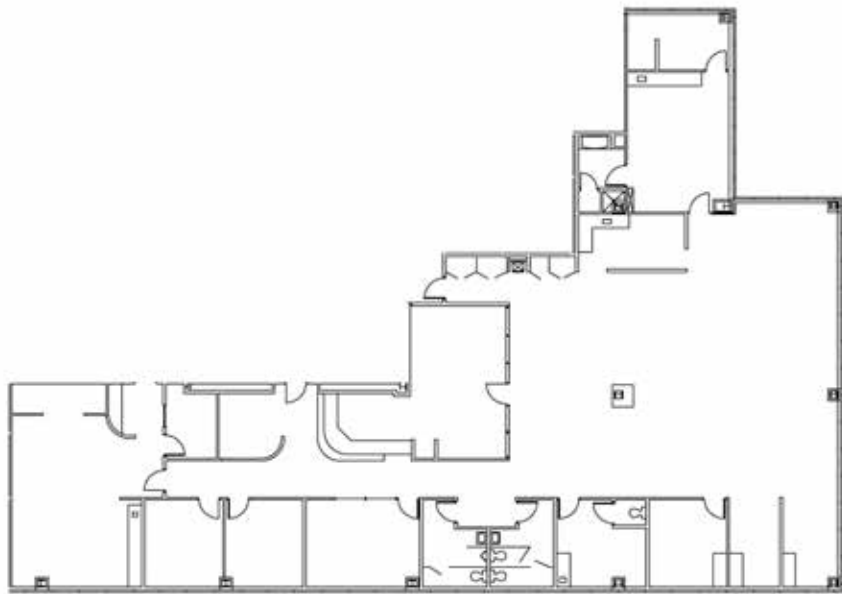


SUITE 5103 - 4,086 SF

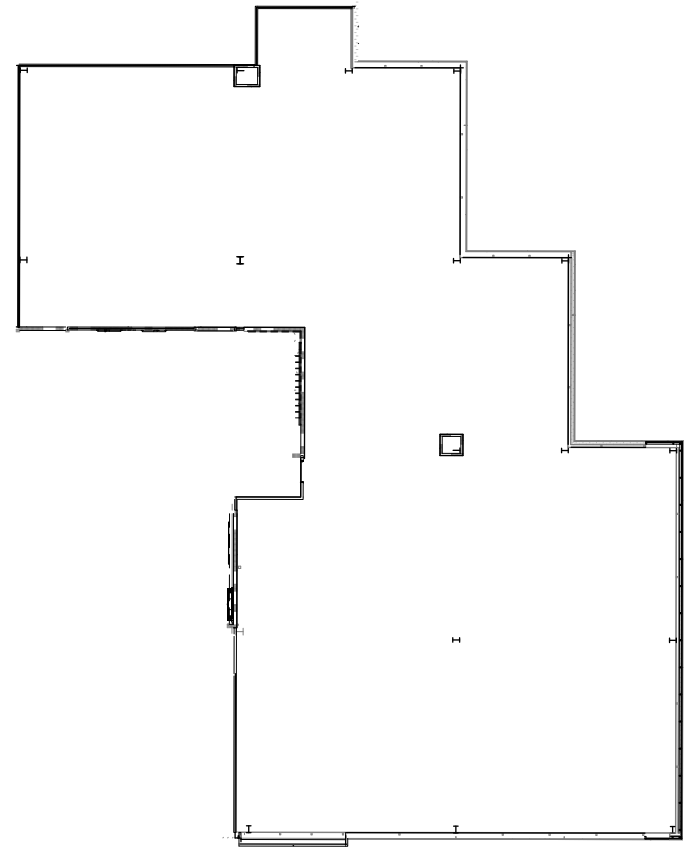


SUITE 5106 - 1,565 SF

BUILDING 5000 FLOORPLANS



SUITE 5304 - 6,009 SF



SUITE 5402 - 8,000 SF
Shell Condition

AREA MAP

