

2701 COLTSGATE ROAD

CHARLOTTE | NORTH CAROLINA
PROFESSIONAL OFFICE SPACE



CONTACT:
TIFFANY SLAYDEN
704-906-9699
tiffany@FlagshipHP.com

FOR LEASE

PROPERTY OVERVIEW

PROPERTY SUMMARY

- Three-story Class A professional office building
- Surface parking at a ratio of 4:1
- Multiple route options for ingress/egress
- Monument signage opportunity
- Conveniently located in the heart of SouthPark
- Surrounded by ample retail and dining opportunities

VIRTUAL TOUR LINK



CONTACT:

TIFFANY SLAYDEN
704-906-9699
tiffany@FlagshipHP.com



TOTAL BUILDING AREA:
± 40,215 SF



AVAILABLE SPACE:
SUITE 103: ± 1,858 SF
SUITE 200: ± 2,500 - 8,887 SF



LEASE RATE:
\$35.00/ SF

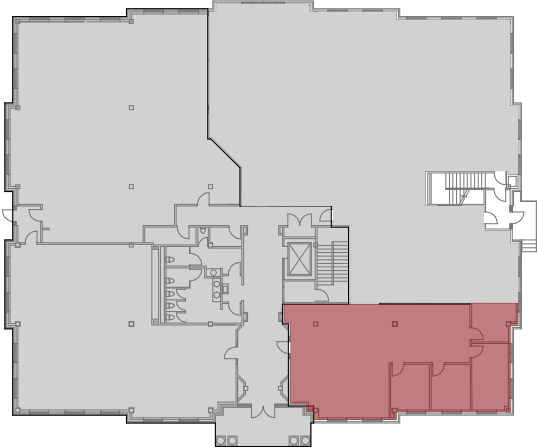
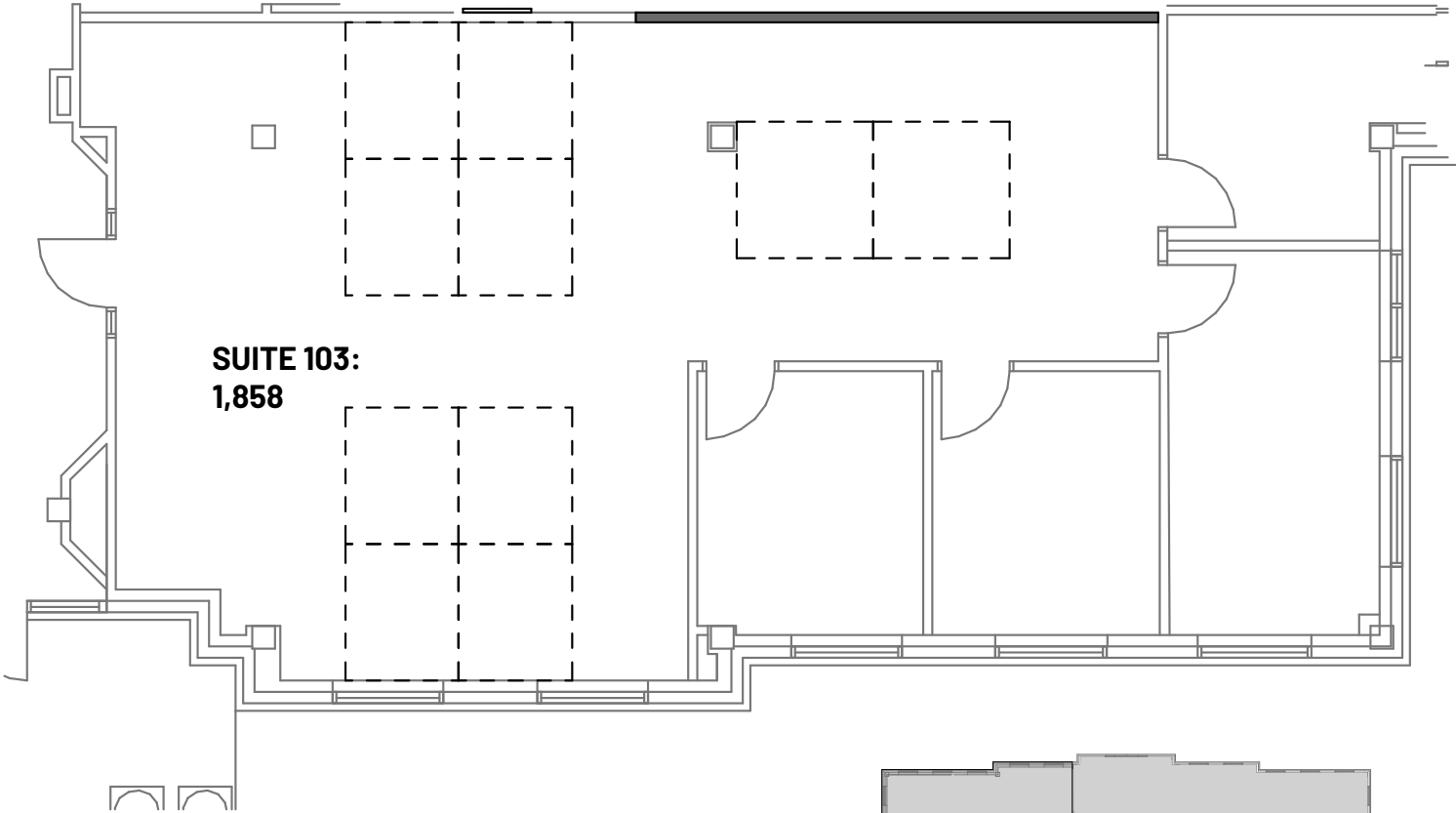


LEASE TYPE:
Full Service



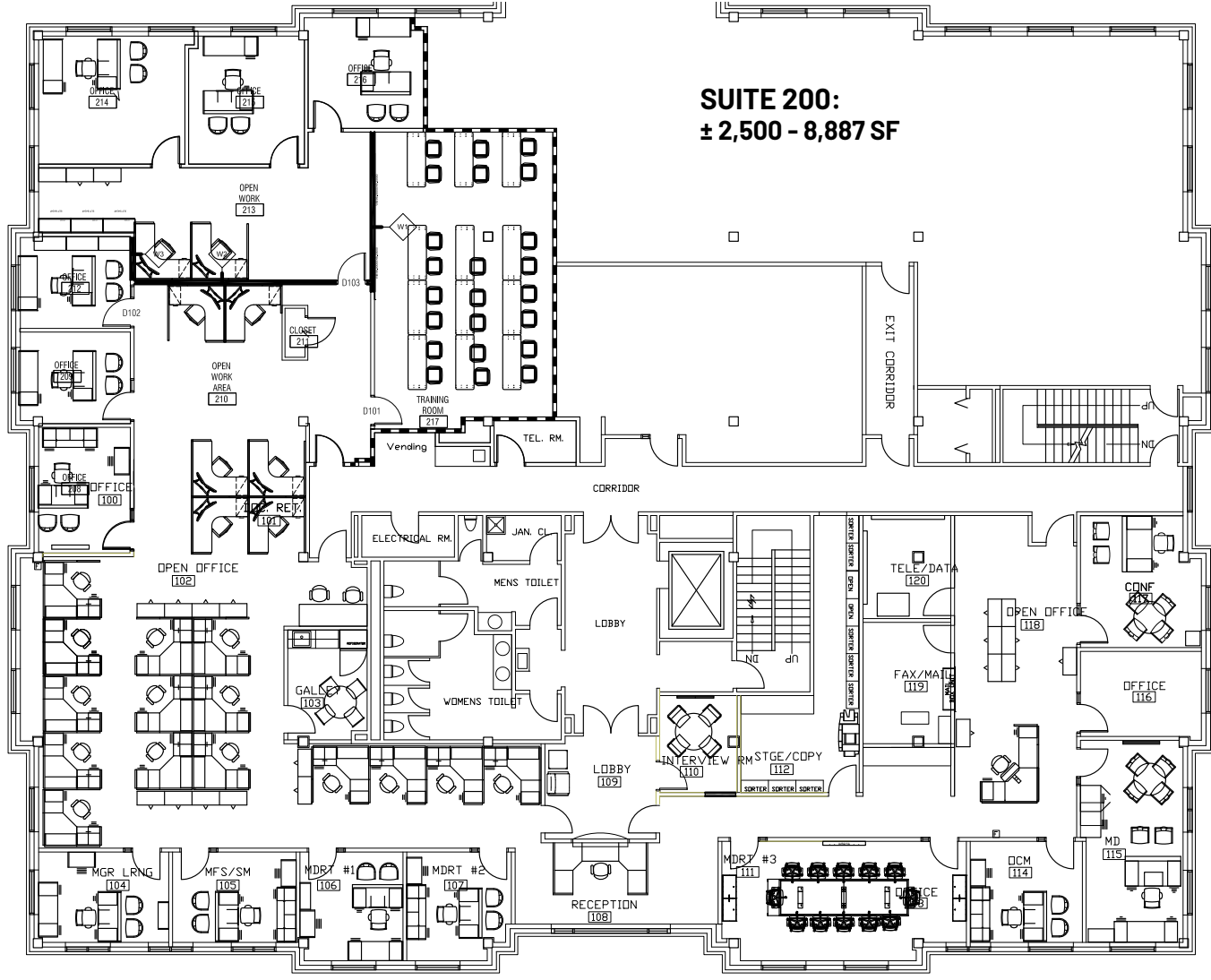
YEAR BUILT:
1994

FLOOR PLAN: SUITE 103



■ SUITE 103

FLOOR PLAN: SUITE 200



SUITE 200:
± 2,500 - 8,887 SF

AREA MAP

