

# 205 SAGE ROAD

CHAPEL HILL | NORTH CAROLINA

AVAILABLE  
FOR LEASE



## BUILDING SUMMARY

- Two-story medical office building
- Less than half a mile from I-40 and 15-501 intersection
- Recently replaced HVAC system
- Renovated common areas and lobbies
- Parking ratio of 5:1,000 SF

## BUILDING SPECIFICATIONS

**TOTAL BUILDING SIZE:**  
± 20,878 SF

**TOTAL AVAILABLE SPACE:**  
Suite 203: ± 2,091 SF

**ASKING LEASE RATE:**  
\$25.00/SF

**LEASE TYPE:**  
NNN

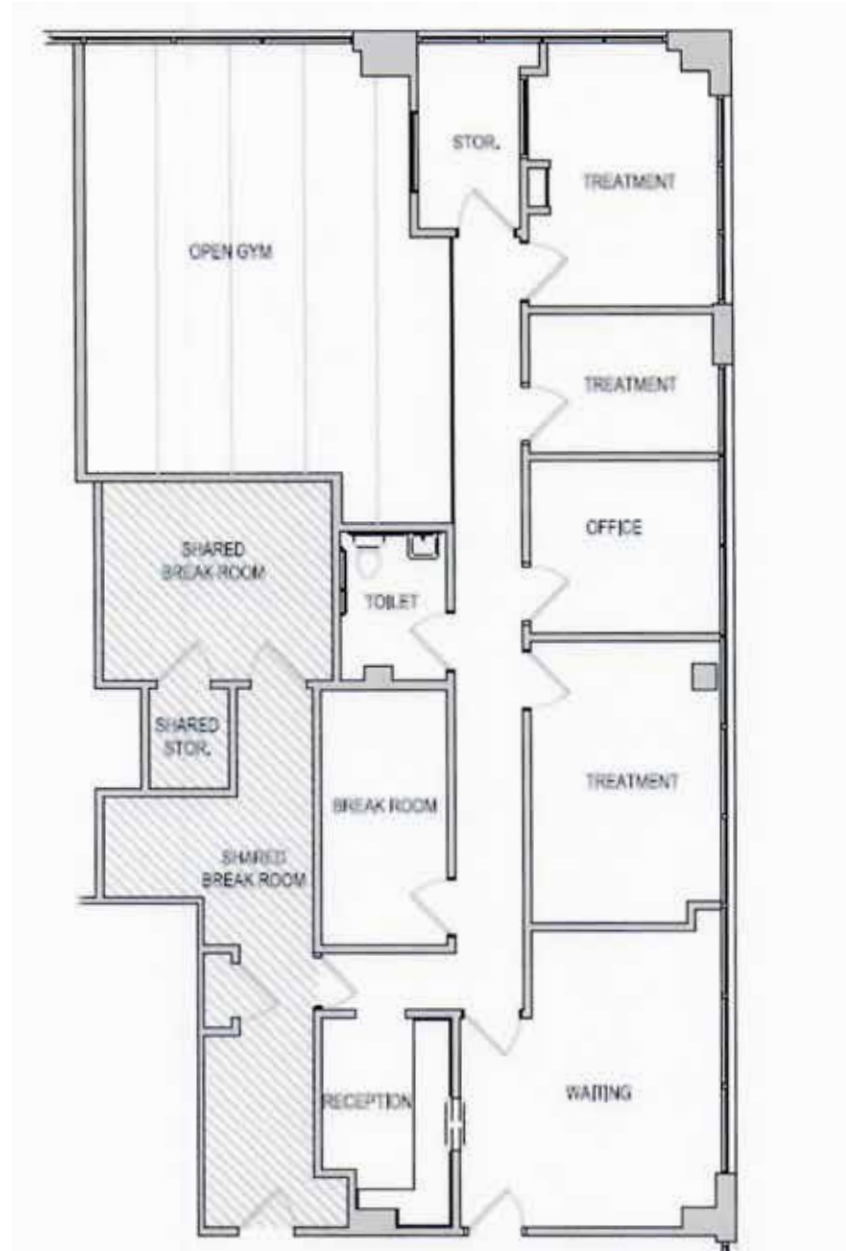
**BUILT:**  
2002

**ELAINE BOYLE**  
d. 919-348-7943  
elaine@FlagshipHP.com

400 Ashville Ave Suite 340, Cary, NC 27518 | P. 704-442-0222 | F. 704-367-0196 | [www.FlagshipHP.com](http://www.FlagshipHP.com)

©2023 The information contained herein was obtained from sources believed reliable; however, Flagship Healthcare Properties makes no guarantees, warranties, or representations as to the completeness or accuracy thereof. The presentation of this property is submitted subject to errors, omissions, changes of price or conditions prior to sale or lease, or withdrawal without notice.

# FLOORPLAN



Suite 203: 2,091 SF



# AERIAL MAP

