

LAKE NORMAN MEDICAL PLAZA

134, 146, 170 Medical Park Road | Mooresville, NC

AVAILABLE FOR LEASE



134 MEDICAL PARK ROAD:
Total Building Area: ± 45,108 RSF
Year Built: 2000
Lease Rate: \$28.00/SF, FS
Total Availability: Fully Leased

146 MEDICAL PARK ROAD:
Total Building Area: ± 49,839 RSF
Year Built: 2005
Lease Rate: \$28.00/SF, FS
Total Availability: ± 9,339 RSF

170 MEDICAL PARK ROAD:
Total Building Area: ± 44,072 RSF
Year Built: 2022
Lease Rate: \$28.00/SF, FS
Total Availability: ± 13,445 RSF

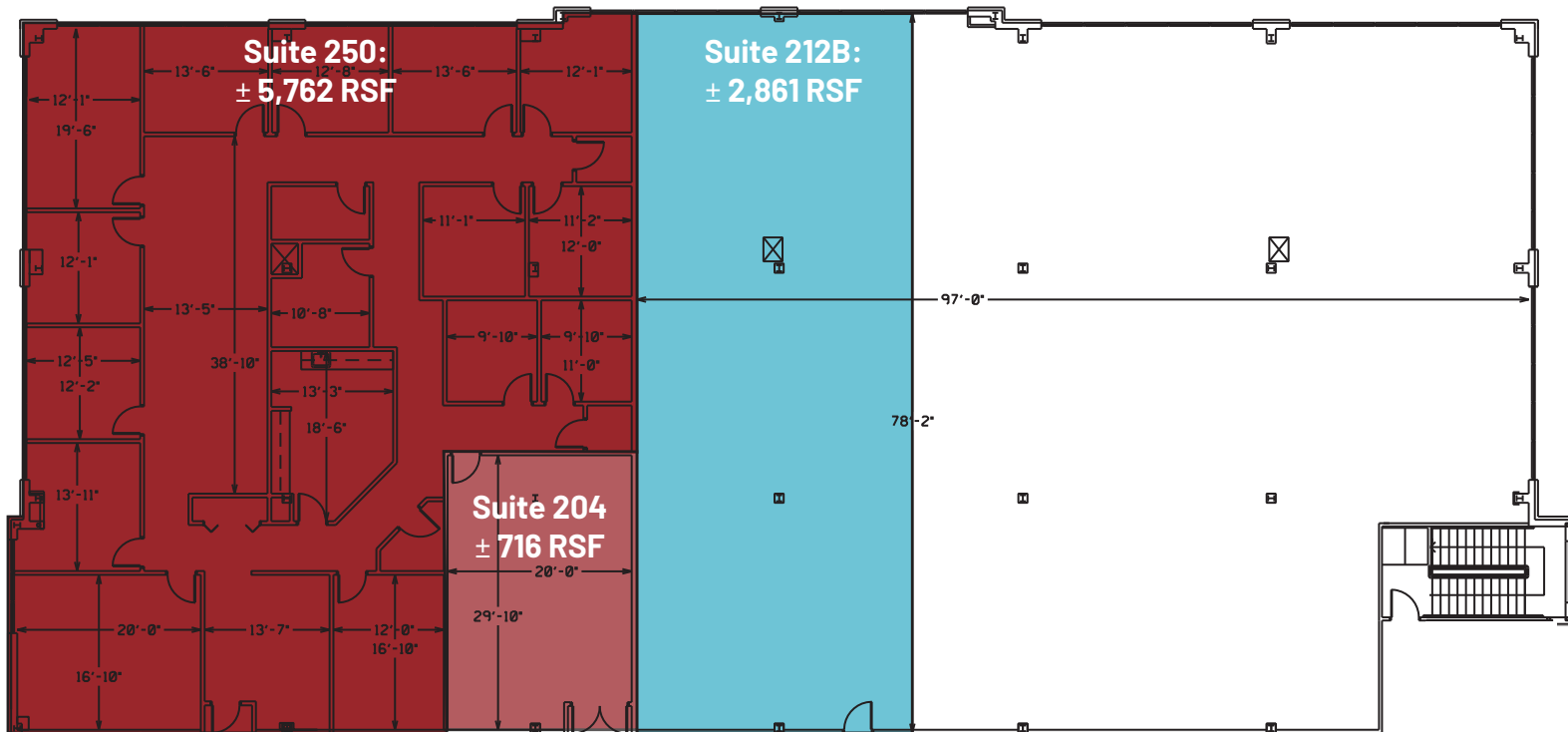
GREG MCINTOSH
d. 704-749-7248
greg@FlagshipHP.com

WILL ROBERTSON
d. 704-971-8904
will@FlagshipHP.com

BUILDING SUMMARY

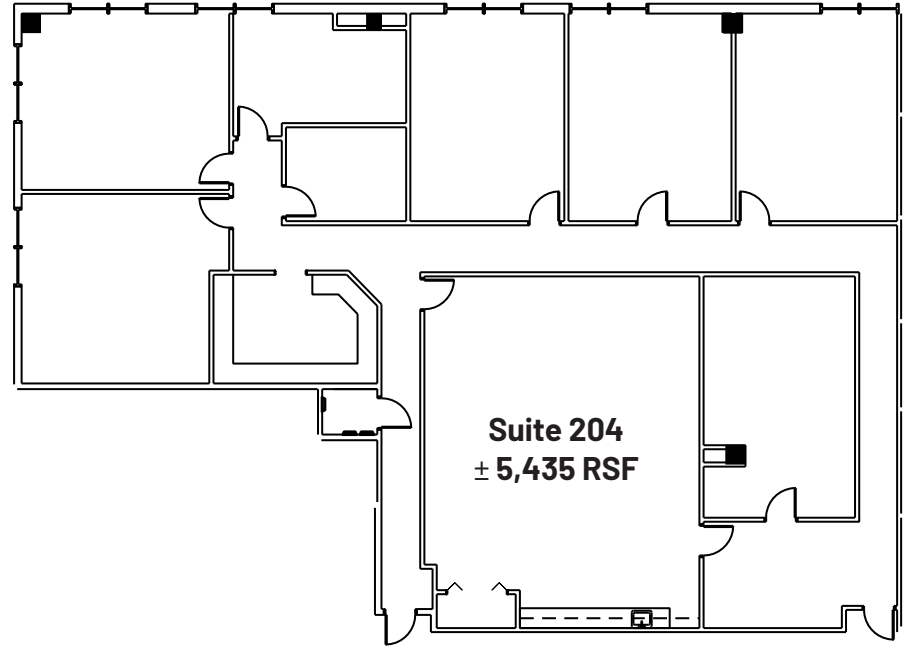
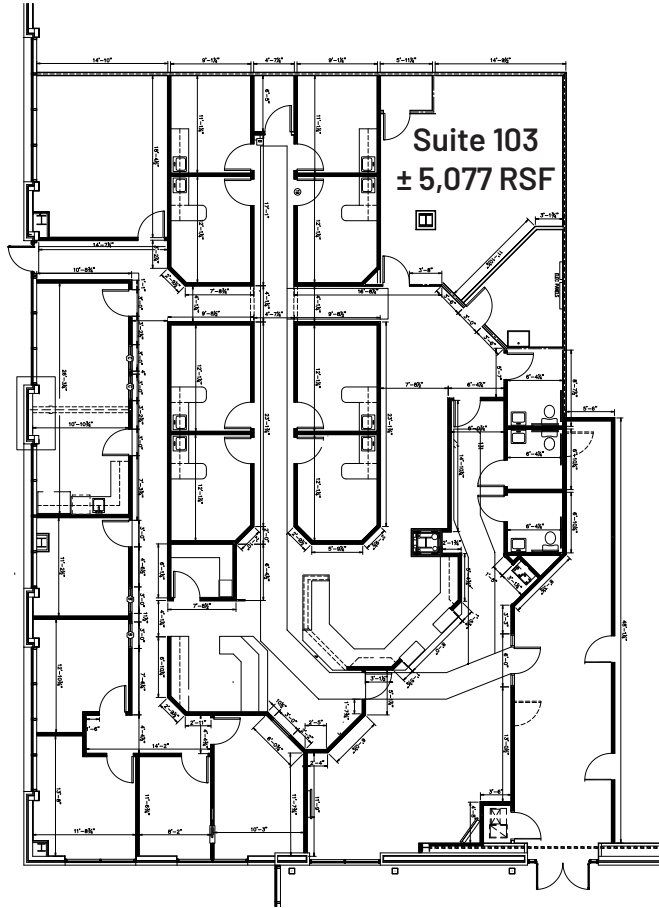
Lake Norman Medical Plaza features three (3) medical office buildings within walking distance of Lake Norman Regional Medical Center, and near Lowe's Home Improvement headquarters. The plaza offers an attractive tenant mix includes cardiology, oncology, imaging, orthotics and prosthetics and physical rehabilitation. The buildings are owned and professionally managed by Healthcare Trust of America, Inc.

146 MEDICAL PARK ROAD
MEDICAL SPACE



SUITE	SF	AVAILABILITY
Suite 204	± 716 RSF	Immediate
Suite 212B	± 2,861 RSF	Immediate
Suite 250	± 5,762 RSF	Immediate

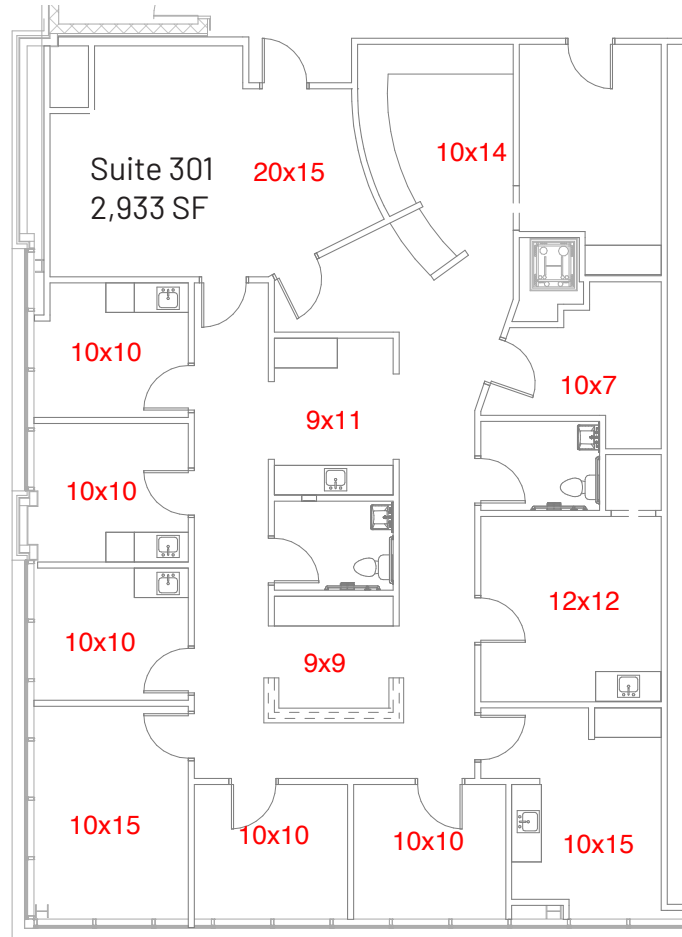
170 MEDICAL PARK ROAD
MEDICAL SPACE



[View 3D BeyondView Here](#)

SUITE	SF	AVAILABILITY
Suite 103	± 5,077 RSF	Immediate
Suite 204	± 5,435 RSF	Immediate
Suite 301	± 2,933 RSF	Immediate

170 MEDICAL PARK ROAD MEDICAL SPACE



SUITE	SF	AVAILABILITY
Suite 103	± 5,077 RSF	Immediate
Suite 204	± 5,435 RSF	Immediate
Suite 301	± 2,933 RSF	Immediate

AERIAL VIEW

