

# 912 INLET SQUARE DRIVE

MURRELLS INLET, SOUTH CAROLINA

AVAILABLE FOR LEASE  
MOVE-IN READY SPEC SUITE



## BUILDING SPECIFICATIONS

|                       |                  |
|-----------------------|------------------|
| Total Available Space | ± 3,402 SF       |
| Parking Ratio         | 5/1,000 SF       |
| Asking Lease Rate     | Call For Pricing |

- Rare 2nd generation medical space
- Located in close proximity to Tideland's Waccamaw Hospital
- Near Highway 17
- Can be subdivided
- Building signage
- Convenient patient parking
- Move-in ready spec suite

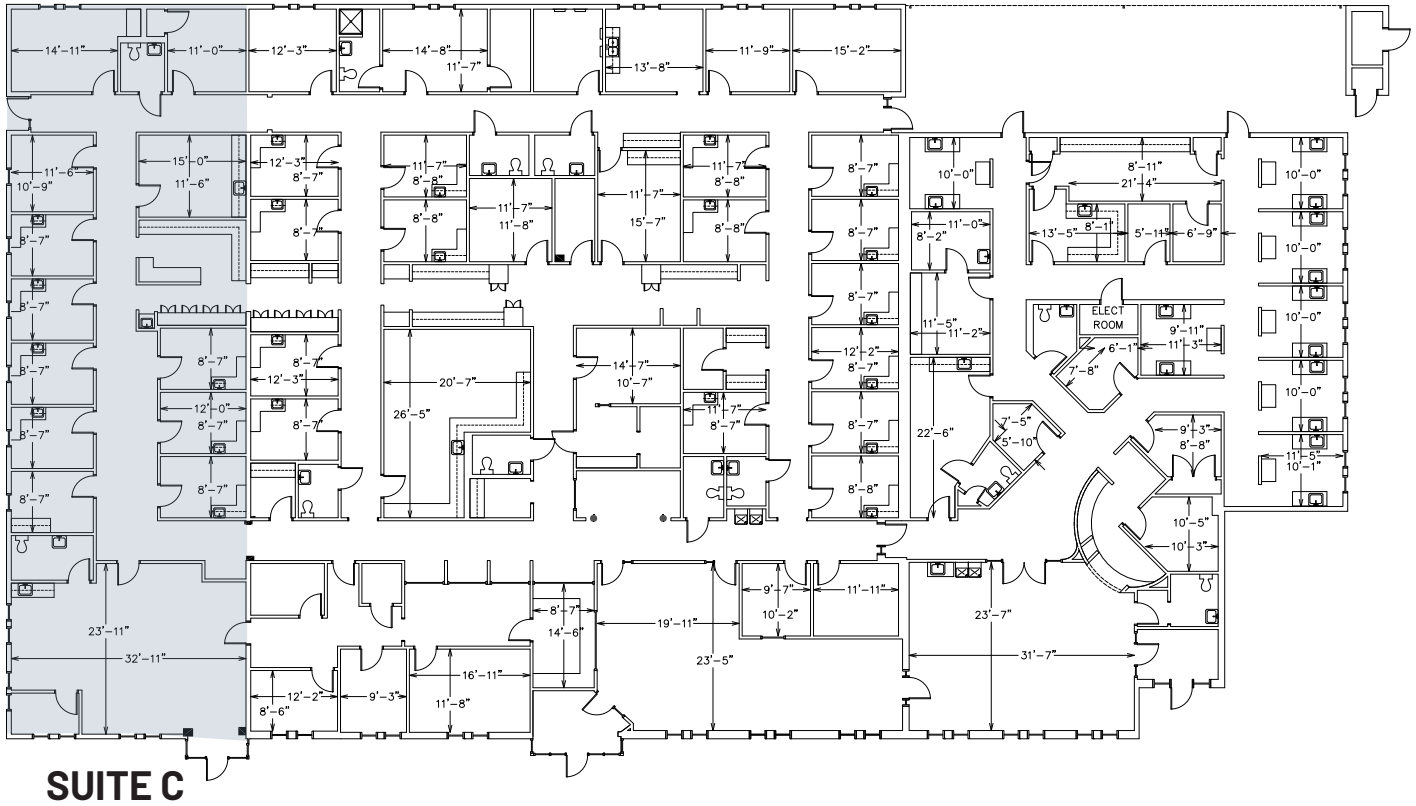
Reed Griffith  
d. 704-971-8908  
reed@FlagshipHP.com

2701 Coltsgate Road, Suite 300 Charlotte, North Carolina 28211  
P. 704-442-0222 | F. 704-367-0196 | www.FlagshipHP.com

©2023 The information contained herein was obtained from sources believed reliable; however, Flagship Healthcare Properties makes no guarantees, warranties, or representations as to the completeness or accuracy thereof. The presentation of this property is submitted subject to errors, omissions, changes of price or conditions prior to sale or lease, or withdrawal without notice.



# SUITE C: 3,402 SF



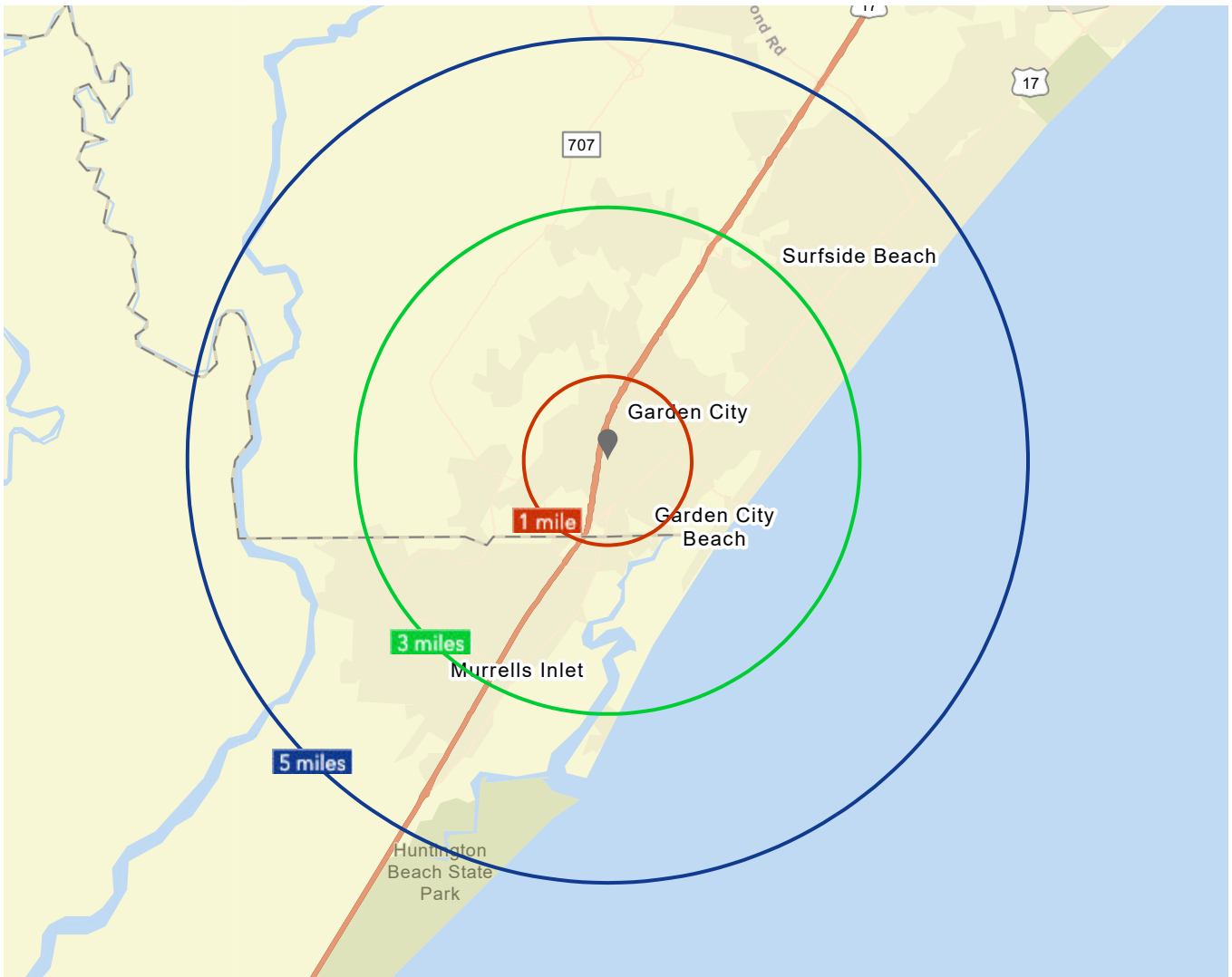
**3,402**  
AVAILABLE SF



**Immediately**  
DATE AVAILABLE



**Contact Broker**  
LEASE RATE



## 2022 FIVE MILE DEMOGRAPHICS



**32,380**

HOUSEHOLDS



**\$87,210**

AVG. HOUSEHOLD  
INCOME



**68,479**

POPULATION



**54.0**

MEDIAN AGE

Reed Griffith  
d. 704-971-8908  
reed@FlagshipHP.com



**FLAGSHIP**  
HEALTHCARE PROPERTIES

2701 Coltsgate Road, Suite 300 Charlotte, North Carolina 28211 P. 704-442-0222 | F. 704-367-0196 | www.FlagshipHP.com

©2023 The information contained herein was obtained from sources believed reliable; however, Flagship Healthcare Properties makes no guarantees, warranties, or representations as to the completeness or accuracy thereof. The presentation of this property is submitted subject to errors, omissions, changes of price or conditions prior to sale or lease, or withdrawal without notice.