

# MINT HILL MEDICAL PLAZA

10545 BLAIR ROAD | MINT HILL, NORTH CAROLINA

AVAILABLE  
FOR LEASE



## BUILDING SUMMARY

- Mint Hill Medical Plaza is located near the intersection of I-485 and Blair Road
- Close proximity to Novant Health Mint Hill Hospital
- 1st & 2nd floor availability ranging from 1,400 - 19,600 RSF
- 2nd Generation Medical Office and General Office spaces available
- Convenient to various retail amenities along Abemarle Road
- Atrium Health is the anchor tenant

## BUILDING SPECIFICATIONS

**TOTAL BUILDING SIZE:**  
± 60,230 SF

**TOTAL AVAILABLE SPACE:**  
± 1,400 - 19,600 RSF

**YEAR BUILT:**  
2007

**ASKING LEASE RATE:**  
Call for pricing

**Tiffany Slayden**

d. 704-971-8906

tiffany@FlagshipHP.com

2701 Coltsgate Road, Suite 300 Charlotte, North Carolina 28211 | P. 704-442-0222 | F. 704-367-0196 | [www.FlagshipHP.com](http://www.FlagshipHP.com)

©2020 The information contained herein was obtained from sources believed reliable; however, Flagship Healthcare Properties makes no guarantees, warranties, or representations as to the completeness or accuracy thereof. The presentation of this property is submitted subject to errors, omissions, changes of price or conditions prior to sale or lease, or withdrawal without notice.

# MINT HILL MEDICAL PLAZA

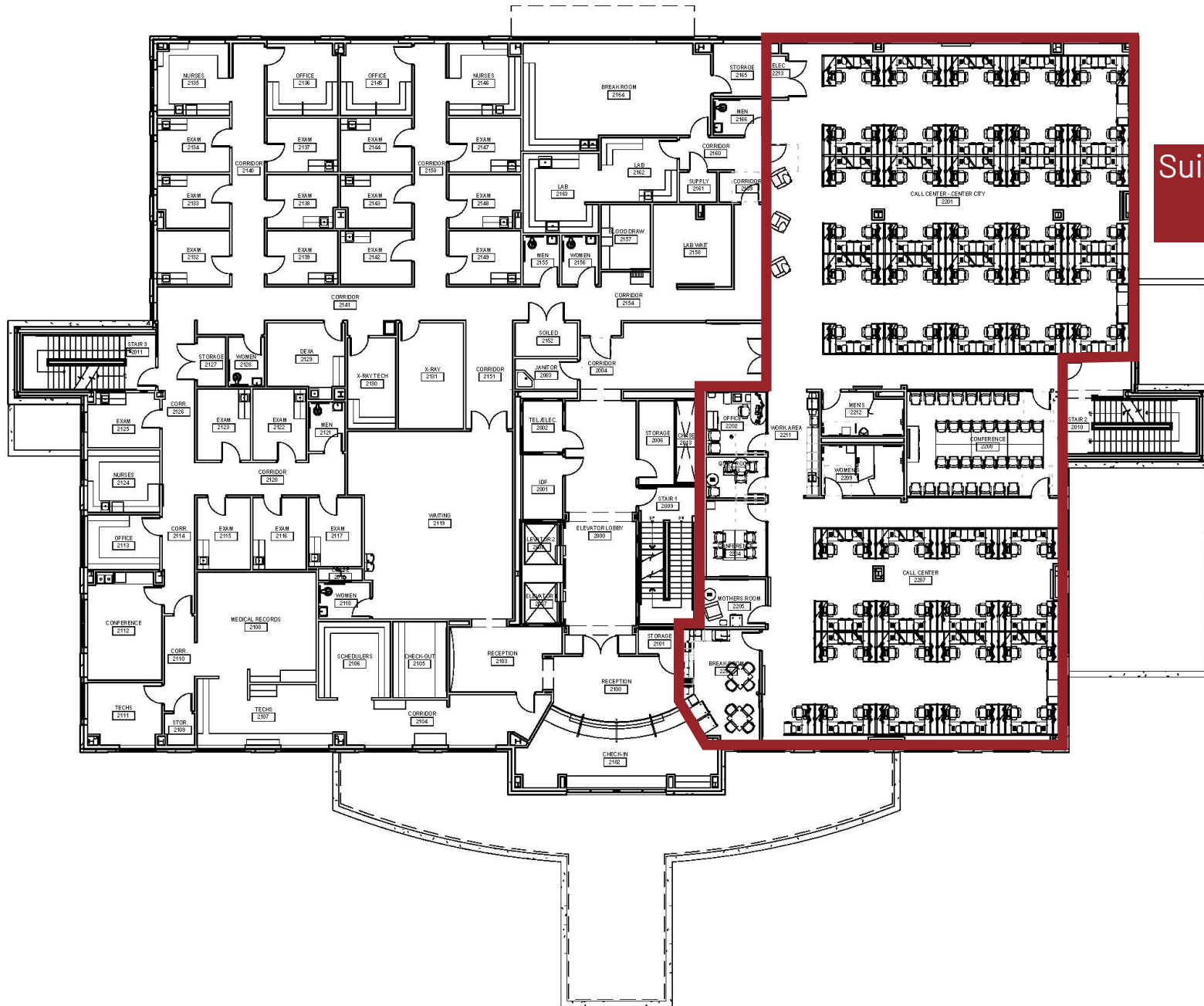
10545 BLAIR ROAD | MINT HILL, NORTH CAROLINA



Suites 104 & 106:  
± 2,896 RSF

# MINT HILL MEDICAL PLAZA

10545 BLAIR ROAD | MINT HILL, NORTH CAROLINA



Suites 200 & 202:  
± 6,145 RSF

# MINT HILL MEDICAL PLAZA

10545 BLAIR ROAD | MINT HILL, NORTH CAROLINA

Suites 201:  
± 13,464 RSF



# MINT HILL MEDICAL PLAZA

10545 BLAIR ROAD | MINT HILL, NORTH CAROLINA

