

# 717 S. TORRENCE STREET

CHARLOTTE | NORTH CAROLINA

AVAILABLE FOR LEASE



- 717 S. Torrence street is a three-story MOB
- Located near the intersection of S. Kings Drive and E. Morehead Street
- Nearby amenities are abound in Midtown Charlotte
- Easy access to I-277, Hwy 74, and Providence Road

## BUILDING SPECIFICATIONS

Total Building Area	± 7,744 SF
Available Space	Suite 200: ± 2,443 SF
Asking Lease Rate	\$28.00/SF
Lease Type	Modified Gross, <i>with electrical &amp; janitorial paid by tenant</i>

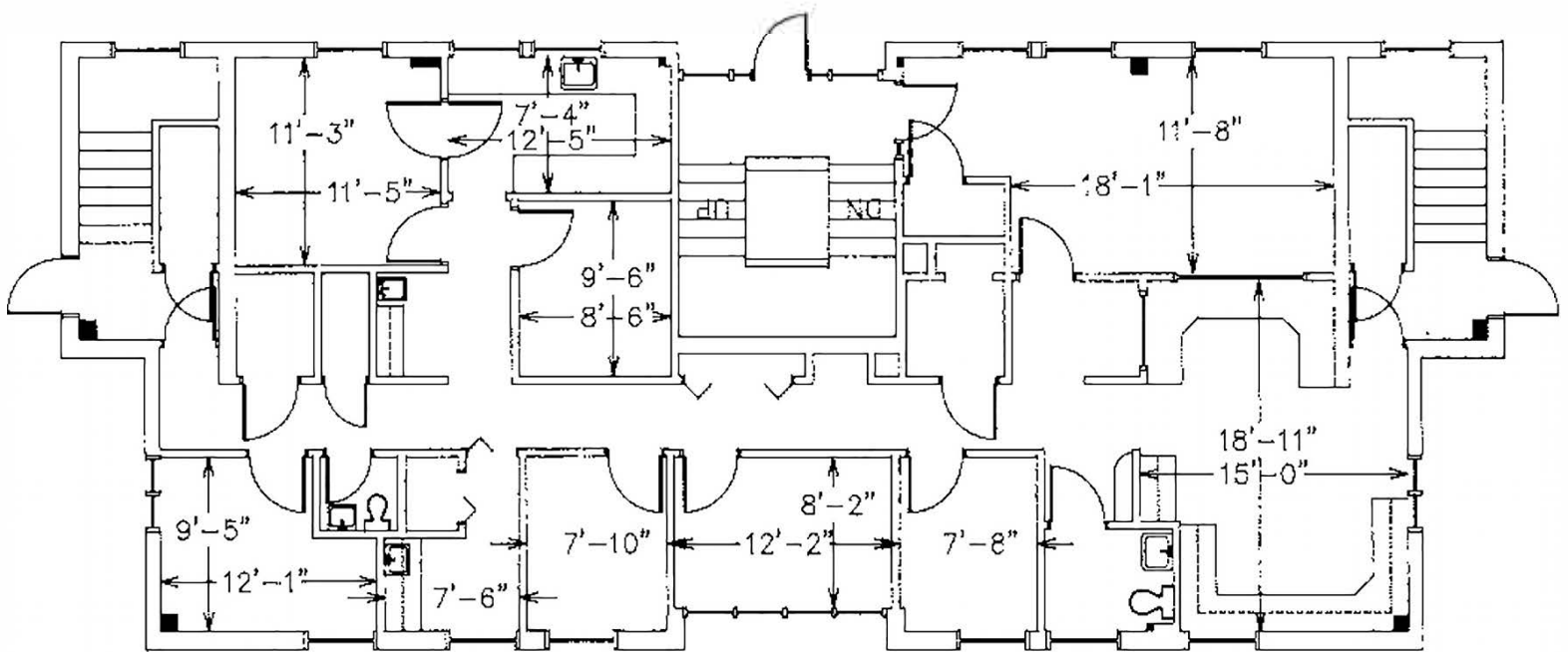
**Tiffany Slayden**  
d. 704-971-8906  
tiffany@FlagshipHP.com

**Reed Griffith**  
d. 704-971-8908  
reed@FlagshipHP.com

2701 Coltsgate Road, Suite 300 Charlotte, North Carolina 28211  
P. 704-442-0222 | F. 704-367-0196 | www.FlagshipHP.com



# MEDICAL OFFICE SPACE SECOND FLOOR

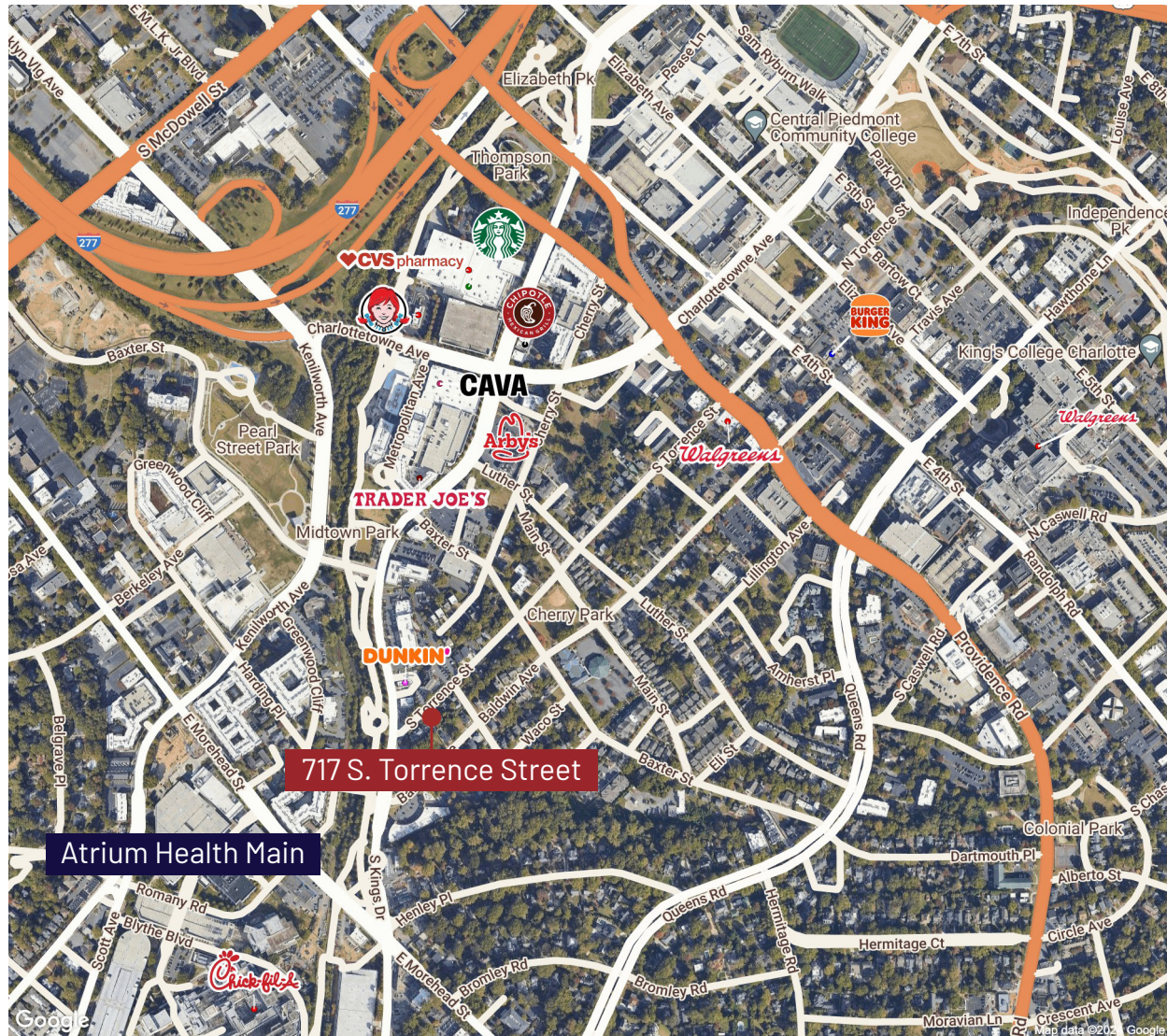


2701 Coltsgate Road, Suite 300 Charlotte, North Carolina 28211  
P. 704-442-0222 | F. 704-367-0196 | [www.FlagshipHP.com](http://www.FlagshipHP.com)





# AERIAL MAP 717 S. TORRENCE STREET



**Tiffany Slayden**  
d. 704-971-8906  
tiffany@FlagshipHP.com

**Reed Griffith**  
d. 704-971-8908  
reed@FlagshipHP.com

2701 Coltsgate Road, Suite 300 Charlotte, North Carolina 28211  
P. 704-442-0222 | F. 704-367-0196 | www.FlagshipHP.com



**FLAGSHIP**  
HEALTHCARE PROPERTIES