

3901 N. ROXBORO STREET

DURHAM | NORTH CAROLINA

AVAILABLE
FOR LEASE



BUILDING SUMMARY

- Desirable one-story medical office building providing easy access for all patients
- Excellent visibility on highly traveled N. Roxboro Street corridor with close proximity to Duke Regional Hospital, Hwy 501, and Hwy 70
- Average Vehicles Per Day is over 9,000
- Common areas with Class A finishes
- Located in strong medical corridor
- Abundant parking
- Exterior signage

BUILDING SPECIFICATIONS

TOTAL BUILDING SIZE:
± 26,046 SF

TOTAL AVAILABLE SPACE:
± 1,800 SF

YEAR BUILT:
1988

ASKING LEASE RATE:
\$20.00/SF, NNN

ELAINE BOYLE

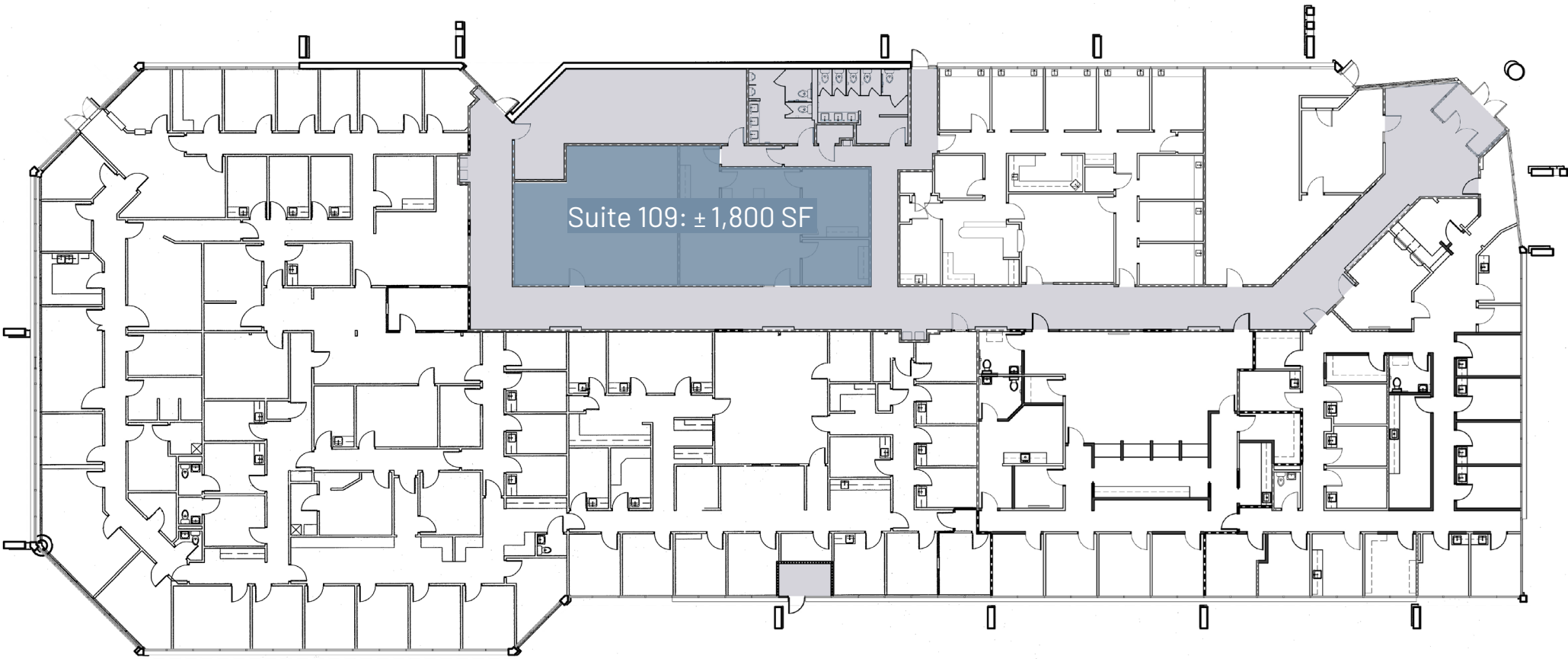
d. 919-348-7943

elaine@FlagshipHP.com

400 Ashville Ave Suite 340, Cary, NC 27518 | P. 704-442-0222 | F. 704-367-0196 | www.FlagshipHP.com

©2023 The information contained herein was obtained from sources believed reliable; however, Flagship Healthcare Properties makes no guarantees, warranties, or representations as to the completeness or accuracy thereof. The presentation of this property is submitted subject to errors, omissions, changes of price or conditions prior to sale or lease, or withdrawal without notice.

FLOORPLAN



AERIAL MAP

