

205 SAGE ROAD

CHAPEL HILL | NORTH CAROLINA

AVAILABLE
FOR LEASE



BUILDING SUMMARY

- Two-story medical office building
- Less than half a mile from I-40 and 15-501 intersection
- Recently replaced roof and HVAC
- Renovated common areas and lobbies
- Parking ratio of 5:1,000 SF

BUILDING SPECIFICATIONS

TOTAL BUILDING SIZE:
± 20,878 SF

TOTAL AVAILABLE SPACE:
Suite 203: ± 2,091 SF

ASKING LEASE RATE:
\$25.00/SF

LEASE TYPE:
NNN

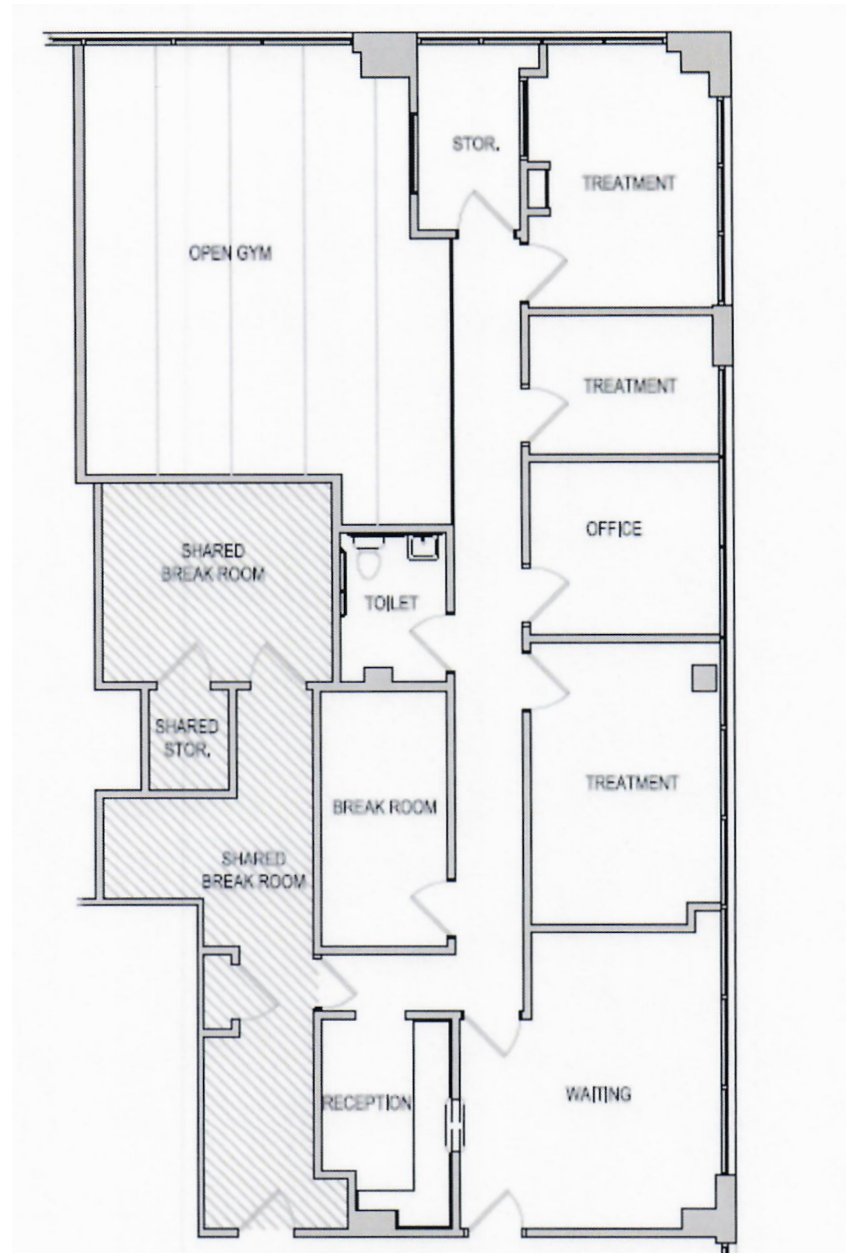
BUILT:
2002

ELAINE BOYLE
d. 919-348-7943
elaine@FlagshipHP.com

400 Ashville Ave Suite 340, Cary, NC 27518 | P. 704-442-0222 | F. 704-367-0196 | www.FlagshipHP.com

©2023 The information contained herein was obtained from sources believed reliable; however, Flagship Healthcare Properties makes no guarantees, warranties, or representations as to the completeness or accuracy thereof. The presentation of this property is submitted subject to errors, omissions, changes of price or conditions prior to sale or lease, or withdrawal without notice.

FLOORPLAN



Suite 203: 2,091 SF

AERIAL MAP

