

309 S. SHARON AMITY ROAD

Charlotte, North Carolina 28211

AVAILABLE
FOR LEASE

BUILDING SPECIFICATIONS

TOTAL BUILDING AREA:
± 38,041 RSF

AVAILABILITIES:
Suite 204: 2,828 RSF

ASKING LEASE RATE:
\$32.00/SF

LEASE TYPE:
Full Service

Reed Griffith

d. 704-971-8908

reed@FlagshipHP.com

2701 Coltsgate Road, Suite 300 Charlotte, North Carolina 28211 | P. 704-442-0222 | F. 704-367-0196 | www.FlagshipHP.com

©2020 The information contained herein was obtained from sources believed reliable; however, Flagship Healthcare Properties makes no guarantees, warranties, or representations as to the completeness or accuracy thereof. The presentation of this property is submitted subject to errors, omissions, changes of price or conditions prior to sale or lease, or withdrawal without notice.





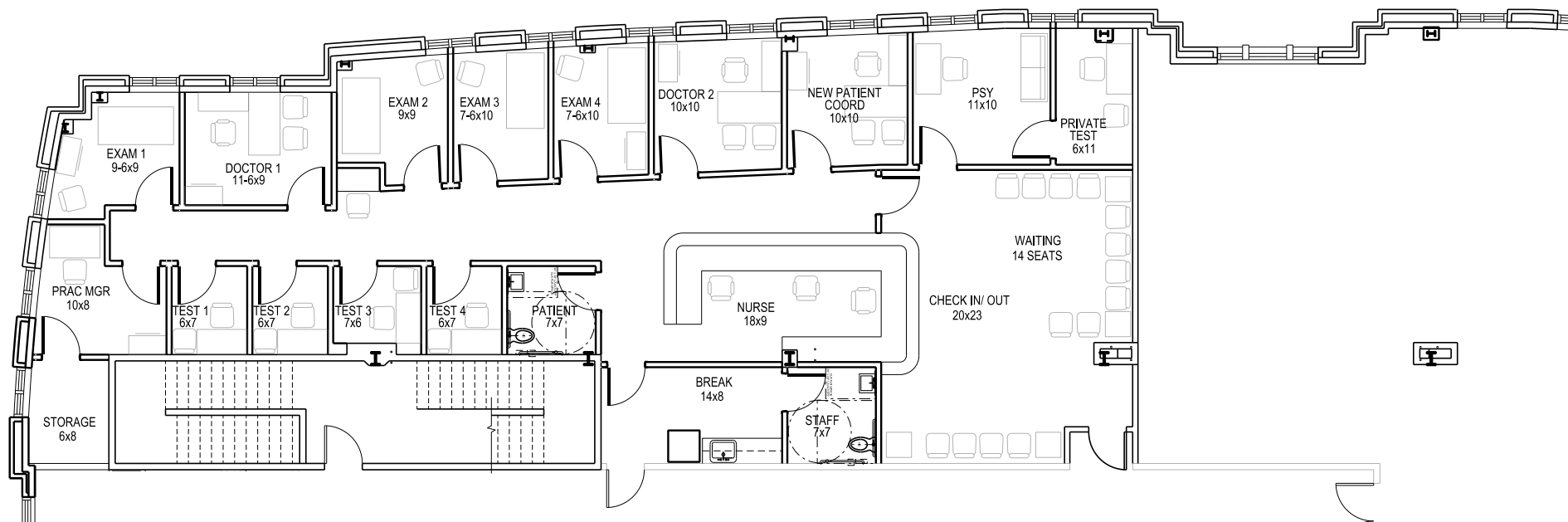
LOCATION

Cotswold Medical Center is located near the intersection of Randolph Road and S. Sharon Amity Road, in one of the most affluent, mature residential areas of South Charlotte - approximately 3 miles from both CMC Main and Presbyterian Novant Main hospital campuses.

Directly across from the property is the Cotswold Shopping Center, anchored by one of the highest performing Harris Teeter groceries in the state.

BUILDING SUMMARY

- 3-story Class "A" medical office building
- Stunning 3-story atrium with skylight
- Parking ratio of 4.6/1000
- Diverse tenant mix with no overlap
- Monument signage provides excellent visibility
- Directly across from Costwold Shopping Center and a abundance of nearby amenities



SUITE 204

SF ± 2,828 SF

Date Available: July 2022